



BIBB COUNTY SCHOOL DISTRICT

Strength of Character and College or Career Ready

Operation Graduation: High School Planning Guide 2018 - 2019

This book belongs to:

Note: This planning guide is for students entering the 9th grade for the first time in 2018. All other students should refer to the Operation Graduation planning guide received during their 9th grade year.

| TABLE OF CONTENTS | |
|--|----|
| Introduction | |
| Letter from the Superintendent | 4 |
| Bibb County Public Schools Vision and Mission | 5 |
| How to Use this Booklet | 5 |
| Middle and High School List | 6 |
| Graduation Requirements | |
| Diploma Options | 8 |
| Graduation Requirements | 9 |
| Promotion Policy | 12 |
| High School Planning | |
| Individual Graduation Plan | 14 |
| Policies and Procedures | 14 |
| Counseling Services | 14 |
| Schedule Changes | 15 |
| Student Achievement | 15 |
| Grading Scale | 15 |
| Progress Reports and Report Cards | 15 |
| Attendance | 15 |
| GPA Calculations | 15 |
| Class Rank and Honor Graduates | 16 |
| Credit Recovery | 16 |
| HOPE GPA Calculation | 16 |
| Credit for Work at Other Schools | 18 |
| Early Graduation | 18 |
| EOC "Test Out" Option | 18 |
| Additional Learning Opportunities and Programs | |
| English Learners (EL) | 19 |
| Hospital Homebound | 19 |
| Program for Exceptional Children (PEC) | 19 |
| Magnet Programs | 19 |
| Specialized High School Programs | 22 |
| JROTC | 22 |
| Online Learning | 22 |
| Alternative High School Program | 23 |
| Personalized Learning Center (PLC) | 23 |
| Twilight School | 23 |
| Athletic, Cheerleading, and Literary Activities Eligibility | |
| Eligibility | 23 |
| College and Career Readiness Pathways Planning Guide | |
| Using the College and Career Readiness Pathway Planning Guide | 26 |
| Frequently Asked Questions | 26 |
| Planning Beyond High School | |
| The Postsecondary Planning Calendar | 28 |
| Programs for Postsecondary Students | |
| ACCEL | 29 |

| | |
|---|----|
| Move on When Ready | 29 |
| Early Admissions | 30 |
| Advanced Placement (AP) Classes | 30 |
| International Baccalaureate (IB) Classes | 30 |
| Work-Based Learning Programs | 30 |
| Postsecondary Admission Standards | 31 |
| Financial Assistance | 32 |
| Types of Financial Aid | 33 |
| Financial Aid/Scholarship Websites | 35 |
| Eligibility for Collegiate Athletics | 36 |
| Postsecondary Admissions Testing | |
| Special Accommodations | 37 |
| Fee Waivers | 37 |
| Preliminary Scholastic Assessment Test (PSAT) | 37 |
| National Merit Scholarship Qualifying Test (NMSQT) | 38 |
| SAT Reasoning Test | 38 |
| ACT | 40 |
| Advanced Placement Tests (AP) | 40 |
| International Baccalaureate Test (IB) | 41 |
| Glossary | |
| Appendix A: CCRPI Fine Arts Pathway | 47 |
| Appendix B: CTAE Career Clusters/Pathways | 48 |
| Appendix C: Notes/Resume Preparation | 56 |
| Appendix D: HOPE Scholarship Rigor Requirements | 57 |
| Appendix E: Individual Graduation Planning Sheet – ACCESS | 59 |
| Appendix F: Individual Graduation Planning Sheet | 60 |



Curtis L. Jones, Jr., Ed.D.
Superintendent

Dear Bibb County High School Students and Parents:

This is an exciting time for you. For nearly a decade the Class of 2022, has been in school preparing for the day it would enter high school; and that day has arrived! Welcome to high school. You have completed elementary and middle school and now you are in the final part of your journey to graduation. Enjoy these years!

I encourage you to make these years the best yet in your school experience. Join clubs, support your school teams, attend school events and get a class ring when the time comes. And of course, prepare yourself for college or a career.

The purpose of this High School Planning Guide is to assist you in making wise choices as you map out a four-year high school program of study. This guide has been developed with input from middle and high school personnel to provide you with information about high school programs, activities, graduation requirements and future career choices that will meet your needs, aptitudes and interests.

We trust that you will find this booklet to be a valuable resource which outlines the many opportunities available to students in the Bibb County School District. I encourage you to make full use of this guide over the next four years as you prepare for graduation and a successful life beyond high school.

Sincerely,

Curtis L. Jones, Jr., Ed.D.
Superintendent

Bibb County School District Vision:

Each student demonstrates strength of character and is college or career ready.

Bibb County School District Mission:

Develop a highly trained staff and an engaged community dedicated to educating each student for a 21st century global society.

Bibb County Board of Education:

- Ella M. Carter
- Dr. Thelma D. Dillard
- Robert M. Easter
- Lester M. Miller
- Daryl J. Morton
- Susan K. Sipe
- Dr. Wanda S. West
- Dr. Sundra M. Woodford

- Dr. Curtis L. Jones Jr., Superintendent

It is the policy of Bibb County Board of Education not to discriminate on the basis of sex, race, religion, marital status, national origin, or disability in its educational programs or employment.

HOW TO USE THIS BOOKLET

We strongly recommend students and parents or guardians utilize the information in this book through graduation from a Bibb County High School.

Our recommendation for use of this booklet is to review each section carefully. We suggest students and parents refer to each section as needed. School administrators, counselors, advisors, and other school personnel are available to clarify or elaborate on this information, to answer questions, and to guide students in the appropriate selection of courses.

Section I provides information about **graduation requirements** for Bibb County students. This section explains requirements for students who enter 9th Grade in the fall of 2018 and beyond. Read carefully so you are familiar with all of the programs available.

Section II provides information about high school **planning for appropriate course work**. It contains details of how to achieve your graduation goals in four years. Admission standards to Georgia Colleges and Universities and Bibb County Board of Education graduation requirements are contained in this section.

Section III provides information that will help you **learn about college and career readiness choices**. It is organized into eighteen clusters with related descriptions, curricula, programs of study, and occupations. You will also find choices for course listings and electives for each program concentration to assist in planning your four-year program.

Section IV provides information to help students **plan for beyond high school**. This section includes information on HOPE Scholarship, Dual Enrollment, a variety of tests which impact college credit or admission, and collegiate athletic eligibility.

Section V provides a glossary of terms.

Section VI provides a list of appendices.

BIBB COUNTY MIDDLE SCHOOLS

Appling Middle School

1210 Shurling Dr.

779-2200

Principal: Dr. Shandrina Griffin-Stewart

Ballard Hudson Middle School

1070 Anthony Rd.

779-3400

Principal: Dr. Eclan David

Howard Middle School

6600 Forsyth Rd.

779-3500

Principal: Mr. Kevin Adams

Miller Middle School

751 Hendley St.

779-4050

Principal: Mr. Jim Montgomery

Rutland Middle School

6260 Skipper Rd.

779-4400

Principal: Mr. Keith Groeper

Weaver Middle School

2570 Heath Rd.

779-4650

Principal: Ms. Crystal Graham

PROGRAMS:

Hutchings College & Career Charter Academy

1780 Anthony Rd.

478-779-2550

Director: Dr. Cassandra Washington

Principal: Ms. Barbara Alston

School of Opportunity, Achievement & Results (SOAR)

2011 Riverside Dr.

478-779-4814

Principal: Dr. Julia Daniely

BIBB COUNTY HIGH SCHOOLS

Central High School

2155 Napier Ave.

779-2300

Principal: Mr. Emanuel Frazier

Howard High School

6400 Forsyth Rd.

779-4850

Principal: Dr. LaToya Smith

Northeast High School

1646 Upper River Rd.

779-4100

Principal: Mr. Steven Jones

Rutland High School

6250 Skipper Rd.

779-3100

Principal: Mr. Kent Sparks

Southwest High School

1775 Williamson Rd.

779-4500

Principal: Mr. Dexter Martin

Westside High School

2851 Heath Rd.

779-3800

Principal: Mr. Michael Horton, Jr.

SPECIALTY SCHOOL

Elam Alexander Academy

2051 Second St.

779-3930

Director: Ms. Brooke Cole

Section I:

Bibb County Schools Diploma Options and Graduation Requirements for Students Entering High School in the Fall of 2018



DIPLOMA OPTIONS

Note: students who entered high school prior to the fall of 2018 should refer to the high school planning guide printed for your entrance year.

- Bibb High School Diploma - indicates the student has successfully completed the course requirements as specified by the State Board of Education and Bibb County Board of Education. A minimum of **24 Carnegie units** are required to receive the diploma. See specific course requirements listed in this planning guide.
- Bibb High School Transition Diploma - awarded to students with disabilities assigned to a special education program who have not met the state assessment requirements referenced in Rule 160-3-.07 Testing Programs – Student Assessment or who have not completed all of the requirements for a high school diploma but who have completed their Individualized Education Programs.

Note: Students with Significant Cognitive Disabilities may graduate and receive a regular high school diploma when the student's IEP team determines that the student has:

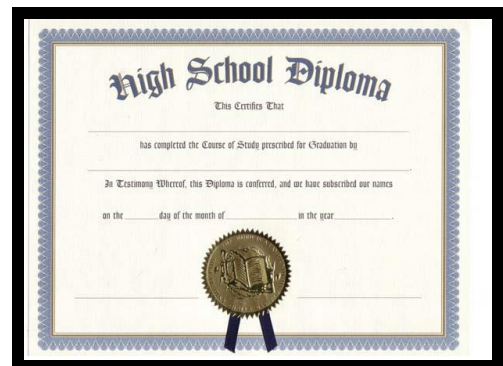
1. completed an integrated curriculum based on the Georgia Standards that includes instruction in Mathematics, English/Language Arts, Science and Social Studies as well as career preparation, self determination, independent living, and personal care to equal a minimum of 24 units of instruction (see Appendix F– High School Graduation Tracking Sheet: Access Courses) and
2. participated in the GAA (Georgia Alternate Assessment) during middle school and high school and earned a proficient score on the high school GAA

3. in Mathematics, English/Language Arts, Science, and Social Studies, and reached the 22nd birthday OR transitioned to an employment/education/training setting in which the supports needed are provided by an entity other than the local school system. State Rule 160-4-2-.48

DUAL ENROLLMENT

Dual Enrollment (DE) is Georgia's dual enrollment program that allows high school students (grades 9-12) to earn college credit while working on their high school diploma. Students must meet the DE requirements. Additionally, the courses for DE funding must be chosen from the DE approved course directory. The DE program covers tuition, mandatory fees and required textbooks. The new program was signed into law on April 30, 2015 and became effective July 1, 2015. The new DE program is administered by the Georgia Student Finance Commission (GSFC). Students should see their school counselor for additional information about DE.

Note: Students must successfully complete all high school graduation requirements in order to participate in the graduation ceremony.



GRADUATION REQUIREMENTS

- **Students entering the ninth grade for the first time in 2018 – 2019** must meet the requirements outlined below and must meet the prescribed student assessment requirements of the Georgia Board of Education.

| Subject | Carnegie Units | Students entering 9 th grade for the first time in 2018 and after |
|--|---|--|
| English (4) See footnotes 3 & 4 | 4 | Four units of English Language Arts (<i>Georgia Standards of Excellence</i>) 1 unit of 9 th Grade Literature and Composition 1 unit of American Literature and Composition 2 additional units from the following: 10 th grade Literature and Composition, World Literature and Composition; British Literature; DE English approved course; can be any AP or IB course |
| Mathematics (4) See footnotes 3, 5 & 8 | 4 | Four units of Mathematics (<i>Georgia Standards of Excellence</i>) 1 unit of Algebra I or equivalent* 1 unit of Geometry or equivalent* 1 unit of Algebra II or equivalent* 1 additional unit from the available 4 th Math Options: Foundations of Algebra (9 th grade only), Pre-Calculus or AP Calculus, AP Statistics, IB, or DE approved Mathematics course * Accelerated Algebra I/Geometry A and Accelerated Geometry B/Algebra II include the standards of Algebra I, Geometry, and Algebra II. At the present time, these are the only equivalent courses for Algebra I, Geometry, and Algebra II. |
| Science (4) See footnotes 3 & 6 | 4 | Four Units of Science 1 unit of Biology (can be AP/IB or DE) 1 unit of Physics or Physical Science (can be AP/IB or DE) 1 unit of Chemistry, Earth Systems, Environmental Science, or an AP/IB course or DE approved Science course 1 unit Science of choice (AP; IB; DE approved Science course; academic science, or specific CTAE science course from DOE approved list) |
| Social Studies (3) See footnotes 3 & 7 | 3 | Three units total 1 unit World History (can be AP/IB; DE) 1 unit US History (can be AP/IB; DE) ½ unit Economics/Business/Free Enterprise (can be AP/IB; DE), Senior level course ½ unit Local, State, and American Government (can be AP/IB; DE for 9 th graders), Senior level course |
| Health & Physical Education (1) See footnote 1 | 1 | One unit total ½ unit of Health and ½ unit of Personal Fitness (3 units of ROTC may substitute for the Health/Personal Fitness Requirement) |
| Career, Technical, or Agricultural Education (CTAE); Fine Arts; or Foreign Language (3) See footnote 2 | 3 | A total of three units required from CTAE and/or Foreign Language and/or Fine Arts and/or American Sign Language (excluding computer applications) or DE Note: To be considered in the Georgia Scholar Program, a student must have one unit in Fine Arts. Note: Students planning to enter or transfer into a University of Georgia institution or other post-secondary institution must take two units of the <u>same</u> foreign language. |
| Electives (5) See footnote 2 | 5 | Five additional elective units , which should complete the student's career pathway or program concentration; math support class units count as electives |
| Total Units Needed | 24 | 24 |
| Grades Required | Passing grades on all 24 above units | |

FOOTNOTES:

1. JROTC course includes required Health and Physical Education components and is Board approved as an allowable substitute.
2. CTAE, Fine Arts, Modern Language, or Journalism electives should be used to complete the student’s pathway of choice.
3. DE courses may substitute for required courses where appropriate. Courses must be selected from the approved course directory.
4. IB English requirements are 9th Grade Lit./Comp; American Lit/Comp; IB 11th World Lit/ Comp; IB 12th World Lit./Comp.
5. IB Math requirements are: Accelerated Algebra I/Geometry A, Accelerated Geometry B/Algebra II, IB Math 1, IB Math 2.
6. IB Science requirements are biology, chemistry, and physics.
7. IB Social Studies requirements are 1 unit local/state/US Gov; 1 unit Economics; 1 unit IB US History; and 1 unit of IB 20th Century World History.
8. The chart below shows the math sequence options for students in the Bibb County School District who are entering the 9th grade in 2018 – 2019:

| Option #1 | Option #2 | Option #3 | Option #4 |
|---|--|---|--|
| Algebra I | Accelerated Algebra I | Foundations of Algebra | 8 th grade: Algebra I (high school credit in middle school) |
| Geometry | Accelerated Geometry | Algebra I | 9 th grade: Geometry |
| Algebra II | Accelerated Pre-Calculus | Geometry | 10 th grade: Algebra II 11 th grade: Pre-Calculus |
| 4 th math option Pre-Calculus, College Readiness Mathematics, AP Calculus, AP Statistics | 4 th math option College Readiness Mathematics, AP Calculus, AP Statistics | Algebra II *Some USG Institutions may require an additional 4 th math | 12 th grade: 4 th math option College Readiness Mathematics, AP Calculus, AP Statistics |

Mathematics Graduation Requirement Guidance
 Georgia Department of Education
 (Page 6 of 20)
 2018 – 2019

| Entered Ninth Grade in 2011 – 2012 | Entered Ninth Grade in 2012-2013 and Subsequent Years |
|---|--|
| Graduation Rule 160-4-2-.48 | Awarding Units of Credit Rule 160-5-1-.15 |
| 4 units of core credit in mathematics | 4 units of core credit in mathematics |
| <ul style="list-style-type: none"> ○ 1 unit in Mathematics I or the equivalent | <ul style="list-style-type: none"> ○ 1 unit in Coordinate Algebra or algebra I or the equivalent |
| <ul style="list-style-type: none"> ○ 1 unit in Mathematics II or the equivalent | <ul style="list-style-type: none"> ○ 1 unit in Analytic Geometry or Geometry or the equivalent |
| <ul style="list-style-type: none"> ○ 1 unit in Mathematics III or the equivalent | <ul style="list-style-type: none"> ○ 1 unit in Advanced Algebra or Algebra II or the equivalent |
| <ul style="list-style-type: none"> ○ Support courses are designated as elective courses | <ul style="list-style-type: none"> ○ Support courses are designated as elective courses |
| <ul style="list-style-type: none"> ○ Additional core mathematics credits must be chosen from the list of GPS/ CCGPS/ AP/ IB/ dual enrollment designated courses | <ul style="list-style-type: none"> ○ Additional core mathematics credits must be chosen from the list of GSE / AP / IB/ DE designated courses |
| <p>Students with Disabilities who earn credit in GPS Mathematics I or the equivalent, along with the associated support course, and GPS Mathematics II or the equivalent, along with the associated support course, may upon determination of the Individualized Education Program Team meet the mathematics diploma requirements by completing GPS Mathematics III or the equivalent, for a total of 3 mathematics core credits.</p> | <p>Students with Disabilities who earn credit in Coordinate Algebra or Algebra I or the equivalent, along with the associated support course, and Analytic Geometry or Geometry or the equivalent, along with the associated support course, may upon determination of the Individualized Education Program Team meet the mathematics diploma requirements by completing Advanced Algebra or Algebra II or the equivalent, for a total of 3 mathematics core credits.</p> |
| <p>Students with Disabilities, who were identified prior to enrollment in high school and have a disability affecting mathematics achievement, may follow an alternative course sequence to meet the mathematics course requirements of the graduation rule 160-4-2-.48. The alternative course sequence includes receiving dispensation from completing Advanced Algebra or Algebra II. The alternative course sequence would allow a student with disabilities earning core credit in Mathematics I and II with two other mathematics courses to satisfy the minimum mathematics requirements for high school graduation.</p> | <p>Students with Disabilities, who were identified prior to enrollment in high school and have a disability affecting mathematics achievement, may follow an alternative course sequence to meet the mathematics course requirements of the graduation rule 160-4-2-.48. The alternative course sequence includes receiving dispensation from completing Advanced Algebra or Algebra II. The alternative course sequence would allow a student with disabilities earning core credit in Coordinate Algebra or Algebra I and Analytic Geometry or Geometry with two other mathematics courses to satisfy the minimum mathematics requirements for high school graduation.</p> |

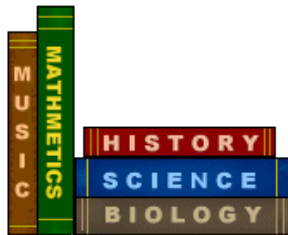
PROMOTION POLICY

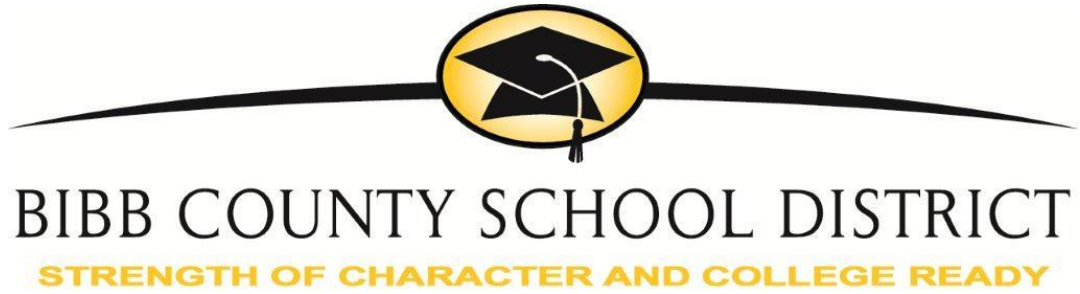
Promotion and retention at the high school level follow the guidelines listed below:

- Students in high school **progress** toward graduation on a **course-by-course basis**. Students take courses based upon academic performance, academic needs, graduation requirements and previous credits earned.
- A student entering high school in Bibb County is expected to graduate within a four year cycle. The graduation requirements in effect at the time of entrance apply for the student's entire high school career. The student, with the assistance of the school staff, should expect to graduate within 4 years following successful completion of required courses.
- The number of credits earned by the student will determine assignments in subsequent years.

Students who entered high school in the Fall of 2018 and subsequent years must have earned the number of credits indicated on the chart below in order to be promoted to the next grade level. Core areas are: English, Math, Science and Social Studies.

- Units necessary to advance to 10th Grade: 5 Units (must include 3 core)
- Units necessary to advance to 11th Grade: 11 Units (must include 6 core)
- Units necessary to advance to 12th Grade: 17 Units (must include 9 core)





Section II:

High School Planning



INDIVIDUAL GRADUATION PLAN

8th Grade: Toward the end of eighth grade, freshman course selections are made based upon recommendations of the eighth grade teachers and with parent consent. All students should have registered for a Georgia Career Information System (GCIS) account. Middle school counselors along with each 8th grade student should complete an Individual Graduation Plan and enter that plan in the student's GCIS account.

9th Grade: During the first year of high school, counselors, advisors, and/or teachers will meet with freshmen to review the tentative Individual Graduation Plan. The purpose of this tentative Individual Graduation Plan is to familiarize students with graduation requirements and program options.

10th, 11th, and 12th grade: Students will meet with advisors to revisit and make any needed adjustments to their Individual Graduation Plan.

Goals of Individual Graduation Plans:

- Ensure that graduation requirements are met. These requirements are the minimum which must be satisfied to receive a Bibb Diploma. There is a course of study which must be successfully completed to meet requirements for regular admission to a University System of Georgia institution. See your guidance counselor for additional information.
- Help administrators, counselors, teachers, and parents participate in the graduation planning process.
- Allow students to take responsibility to register in and pass all courses required for their chosen diploma. As students register for each semester, teachers will advise students about course selection based upon prior performance in the subject area and the chosen career pathway.

It is important to remember that the Individual Graduation Plan and the selection of a career pathway are planning tools. The Individual Graduation Plan, like any other plan, is flexible and may be altered as students' progress through high school. At any time, if students or parents are unsure of how particular course selections affect progress toward graduation, consult with administrators, counselors, or teachers.

Using the appropriate course choice listings in the program concentrations section of this Planning Guide and the sample plan, students and parents can begin designing or making needed adjustments to their four year course of study.

Note: Students must successfully complete all high school graduation requirements in order to participate in the graduation ceremony.

COUNSELING SERVICES

School Counselors are in each high school to work with students individually and in groups to assist with personal, social, career, and educational development. It is critical that students communicate with their high school counselor on a continuous basis throughout their high school experience.

PLACEMENT PROCEDURES

Placement recommendations and reporting student progress are the responsibility of the teachers, school counselors, and other professional staff directly involved with the students. Parents and students should make certain that they are well informed of the requirements for successful completion of all courses and grades. The final decision concerning placement, however, rests with the principal.

STUDENT ACHIEVEMENT

Each student in Bibb County high schools is assigned to an advisement group with a faculty advisor. The purpose of this group is to ensure that all students have periodic advisement during their high school years. Topics of discussion range from course of study selection to extracurricular activity decisions. Each year students update and complete their Individual Graduation Plan during advisement. A staff member is assigned to each student in order to provide an adult advocate who can respond to school related questions or problems as they arise.

SCHEDULE CHANGES

Students will have **five (5) days** after the year begins to request a schedule change. Legitimate reasons for dropping/adding a class within the limited number of days may include these situations:

1. The student has already received maximum credit for the course.
2. The student is taking a course out of sequence.
3. The student is incorrectly scheduled for a class that does not contribute to the student's chosen course of study or CTAE pathway.

Since all students are required to take seven classes each year, any class dropped must be replaced with another class (see reminder below). Schedule changes are subject to space availability in the requested class.

Changes in student schedules for balancing class sizes are at the discretion of the school administration.

AWARDING CARNEGIE UNIT CREDITS

Effective the 2017-2018 academic year, Carnegie Units will be awarded at the end of each semester. Students will receive a half credit for a course that was successfully

completed with a grade of 70 and above in December and in May. Courses with grades 69 and below will not receive credit. The grade received will reflect on the student's transcript.

GRADING SCALE

As mandated by the state, students earn numeric grades. Passing grades are 70 and above. A cumulative numeric average will be computed at the end of each course for scholarship and college entrance requirements. The following scale will appear at the bottom of each student's transcript.

A= 90 and above

B= 80 - 89

C= 70 - 79

F= 69 and below

PROGRESS REPORTS AND REPORT CARDS

Progress reports are given to students to take home every four and one half weeks. Final grades and credit earned will be awarded at the end of each course. Parents are encouraged to contact the student's teacher about their student's progress at any time during the semester. Counselors and teachers are available to discuss with parents the program and the progress of their child.

Attendance – See 2018-2019 Code of Student Conduct for specific attendance requirements.

GPA (Grade Point Average) Calculations

1. Cumulative Grade Point Averages shall be computed for all students (Grades 9 - 12) at the end of each course.
2. All courses attempted by the student, whether a passing or failing grade was earned, will be included in the calculation including all grades earned in summer school and in any approved dual enrollment (ACCEL) course.
3. Grade Point Averages shall be computed using a 100 point scale numeric system and shall include

weights for specified courses. Courses classified as Pre-International Baccalaureate (PIB) or Gifted/Advanced Content shall be weighted by the addition of three (3) points to the final numeric course average. Courses classified as Advanced Placement (AP), International Baccalaureate (IB), and ACCEL (Dual Enrollment) shall be weighted by the addition of five (5) points to the final numeric course average.

4. Weights shall be added when course grades are final.
5. The method used to compute GPA's and Class Rank will be reported to students, parents, and any authorized transcript recipient.
6. Courses taken at the middle school level will not be factored into the high school GPA or HOPE GPA calculation

CLASS RANK CALCULATION

1. In order to determine class rank, the cumulative, weighted Grade Point Average (GPA) will be computed for all seniors **at the end of the first semester (December)** of their senior year. Included in this calculation will be all final course grades (passing and failing) as well as any pending course grades (current weighted grade averages for courses in which the student has been enrolled but for which grades will not be final until the end of the school year such as Advanced Placement and Dual Enrollment classes). Specifics regarding GPA calculation are explained above (GPA Calculations).
2. The above Class Rank Calculation will be used to determine the Valedictorian, the Salutatorian, and the Honor Graduates for the graduating class. The student having the highest cumulative, weighted Grade Point Average who graduates with his or her class will be

the Valedictorian. The student having the second highest cumulative, weighted Grade Point Average who graduates with his or her class will be the Salutatorian. Students with a cumulative weighted Grade Point Average of 90 or higher who graduate with their class will be Honor Graduates.

3. In the case of a tie to determine the Valedictorian, the student having completed the highest number of AP/IB/ACCEL or gifted level courses shall be designated the Class Valedictorian.
4. The method used to compute GPA's and Class Rank will be reported to students, parents, and any authorized transcript recipient.
5. Rank entered on a student's permanent record is available to the student and the parent(s) or guardian(s) of the student.
6. Class Rank is confidential information and thus will only be released a) to appropriate school personnel, b) at the request and with the written consent of the student and/or parent or guardian for students under the age of 18, and c) in response to formal legal processes.

Senate Bill 211

Prohibits local school systems from excluding Move On When Ready (DE) students from Valedictorian or Salutatorian determination. This ruling became effective May, 2017.

CREDIT RECOVERY

Credit Recovery is available to all high school students who are not on track for graduation. Students are given the opportunity to recover credits through content delivered in online classes. Core classes and a number of electives are delivered through a Web-based instructional program. Students have the opportunity to proceed at their own pace until they reach the pre-established completion date (target date).

These online courses are a part of the student's regularly scheduled day and are monitored by a certified, licensed teacher. However, the courses are available via the Internet seven days a week. Students are encouraged to work outside of the school day to complete necessary work.

INTERSESSION (Credit Repair)

Intersession is offered to students who failed a course from the previous semester with a grade of 64-69. The student is then eligible to take the same course during an intersession that must be within 10 school days of the start of the next semester. The highest grade a student may earn is a 70. There may be a fee charged for Intersession courses.

HOPE GPA CALCULATION

To receive HOPE Scholarship funding, students must graduate from a HOPE eligible high school with a 3.0 grade point average on a 4.0 scale as calculated by the Georgia Student Finance Commission (GSFC). In addition, students must meet the new rigorous requirements as identified in Appendix D. (GSFC weights **only** Advanced Placement and International Baccalaureate courses, not gifted and honors courses.) Each grade for a student in English, Mathematics, Science, Social Studies, and Foreign Language classes, which are defined as core curriculum class, is included in the calculation. In addition a student must:

1. Be enrolled as a degree seeking student at an eligible public/private college or university or technical college in Georgia Meet HOPE's Georgia residency requirements.
2. Meet HOPE's U.S. citizenship or eligible non-citizen requirements.
3. Meet Selective Service registration requirements.
4. Meet compliance with the Georgia Drug-Free Postsecondary Education Act of 1990. A student may be ineligible for HOPE payment if he or she has been

convicted of committing certain felony offenses involving marijuana, controlled substances, or dangerous drugs.

5. Not be in default or owe a refund on a student financial aid program.
6. Maintain satisfactory academic progress as defined by the college.
7. Meet HOPE Scholarship Rigor Requirements (See page 52).
8. Courses taken at the middle school level will not be factored into the high school GPA or HOPE GPA calculation

HOPE Scholar funds vary depending on the educational institution.

The **Zell Miller Scholarship Program** is for students seeking a college degree who have demonstrated academic achievement. This scholarship is based on HOPE requirements. A student must graduate with a 3.70 GPA and a minimum score of 1200 on the SAT and/or 26 on the ACT.

Detailed information about Georgia's HOPE Program can be found at www.GAfutures.org or www.gsfc.Georgia.gov/hope .

Note: Effective July, 2016, www.GAcollge411.org changed to www.GAfutures.org

Note: Regardless of the curriculum track, grades in coursework classified as "Advanced Placement" or "International Baccalaureate" will be weighted by the Commission for HOPE Scholarship GPA eligibility. Grades for Gifted, Honors, or other special courses **will be calculated without the Bibb County School District weighting**. For example, if your student earned a weighted grade of 82 in an AP course, HOPE will calculate the grade as 77, which will convert to a 2.0 and then HOPE will add a weight of 0.5 for a total weight of 2.5. (HOPE only adds the additional 0.5 for AP and IB classes, not Gifted/Advanced Content classes.)



CREDIT FOR WORK AT OTHER SCHOOLS

In accordance with Georgia State Board Code 160-5-.15 and the Southern Association of Colleges and Schools Standard 3.4.9, Bibb County Schools will validate competency, by course, before awarding Bibb County Schools credit for work completed at any school (including home school or private school) that is not accredited by approved accrediting agencies: the Southern Association of Colleges and Schools or one of the SACS equivalents, the Georgia Accrediting Commission, or the Georgia Private School Accreditation Council (GAPSAC), or the Georgia Association of Christian Schools, the Association of Christian School International, the Association of Independent Schools.

Bibb County Schools accepts at face value credit transferred from accredited schools as defined above. Students entering a Bibb County High School from private or home schools **not** accredited by one of the above associations will be required to validate competency through testing. Specific requirements regarding validation procedures are contained in Bibb School Board Policy IHF (8). Please contact the local school counseling office for details.

If students attend or plan to attend a school not accredited by one of the above associations or a home school and subsequently request credit for the experience from a Bibb County High School, students will have to pass an End-of-Course -Test or Comprehensive Final Exam to be awarded credit for each course taken at a non-accredited school or home school.

EARLY GRADUATION

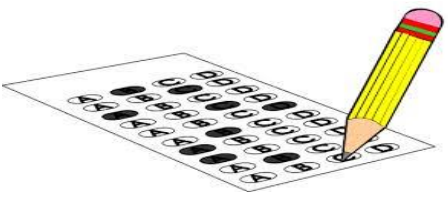
It is possible in certain instances for high school students to earn sufficient credits to allow them to graduate before the end of the expected four-year (eighth term) time frame. Students who desire to graduate at the end of their eleventh grade year or in the middle of their twelfth grade year must meet:

- All the requirements for a Bibb Diploma as outlined the year the student entered high school.
- The student and his/her parent must send a letter of intent **at the beginning of the student's 11th grade year** stating the desire to graduate early.
- The student will need approval of the counselor and principal.
- The student must achieve a grade point average of 3.5 or higher.
- The student must have an overall attendance rate of 95% or better.

EOC "TEST OUT" OPTION

The opportunity exists for students to "test-out" of any course for which there is an associated End of Course assessment (EOC) and earn credit for the course through that process. See State Board of Education Rule 160-5-1-.15. Students must meet the following eligibility requirements to exercise this option:

- The student must not be currently or previously enrolled in the course for which the EOC assessment is being exempted.
- The student must have earned a grade of B or better in the most recent course that is in the same content area of the course for which the student is attempting the EOC.
- The student must receive a teacher recommendation from the teacher in the most recent course in the same content area for which the student is attempting the EOC assessment.
- The student must have parent/guardian permission if the student is less than 18 years of age.
- If the student does not reach the performance level of Exceeds when attempting to test-out will be required to enroll and complete the associated course to receive credit and will retake the EOC assessment following the course.
- A \$50 deposit is required for any student taking the test. If a student scores an Exceed and is awarded credit, the \$50 will be refunded to the student.



doctor's order to receive hospital homebound services. Consult your local school for the form necessary for entry into the program. Instruction in certain courses may be provided on an individualized basis or through Georgia Virtual School (GAVS). Arrangements to meet curricular needs beyond those provided by the homebound teacher must be made through the student's current school.

STATE TESTING

Georgia Milestones

Students entering high school **in the fall of 2018** are required to take the following state-mandated Georgia Milestones Assessments: Algebra, Geometry, U.S. History, Economics, Physical Science (where applicable), Biology, 9th Grade Literature and Composition, and American Literature and Composition. These tests will count **20%** of the student's overall grade for the semester and count as the final exam for the course. Students must take the Georgia Milestones Assessments in order to receive Carnegie Units for the courses requiring the Georgia Milestones Assessment.

OTHER LEARNING OPPORTUNITIES

ENGLISH LEARNERS (EL)

EL is a state-funded instructional program for eligible English Learners (ELs) in grades K-12 (Georgia School Law Code 1981, § 20-2-156, enacted in 1985). The EL program is a standards-based curriculum emphasizing academic and social language development. EL coursework is based upon the World-Class Instructional Design and Assessment Consortium English Language Development (ELD) standards. EL ELA core and elective classes are available for eligible students.

HOSPITAL HOMEBOUND

This program is offered to students who cannot attend their regular school due to illness or accident. Students must be absent or anticipate being absent a minimum of ten (10) consecutive school days *as designated by a*

PROGRAM FOR EXCEPTIONAL CHILDREN (PEC)

Special education services are available to high school students with disabilities. In order to be eligible for special education services, the student must meet specific eligibility requirements in one or more of the following categories: Autism Spectrum Disorder, Deaf-Blind, Deaf/Hard of Hearing, Emotional/Behavioral Disorder, Intellectual Disability, Orthopedic Impairment, Specific Learning Disability, Speech-Language Impairment, Traumatic Brain Injury, Visual Impairment, including Blindness. Special Education services are provided to all high school students with disabilities as indicated in each student's Individual Education Program (IEP).

MAGNET PROGRAMS

Bibb County High Schools offer Bibb County students several choices of programs that are unique to the particular high school. The Fine Arts Magnet Program is available for all students. An application may be obtained from the school counselor. Students who are accepted into a magnet program must take the required courses each semester. Failure to take the required magnet courses can result in dismissal from the magnet program. Students dismissed from a magnet program must return to their zoned high school.

PROGRAM DESCRIPTIONS

Westside High School Focus: Engineering



Students participating in the Westside High School's pre-engineering program will take Foundations of Engineering and Technology, Engineering Concepts, and Engineering Applications. They may also choose to take AP science and math courses. Another option is participation in DE classes which allow students to earn college credit while still in high school.

Fine Arts Magnet - Central High School



Admission to Central Fine Arts Magnet Program is based on school grades and an audition to determine interest and aptitude in the fine arts. Students apply and are selected on the basis of interest, motivation, and commitment to their disciplines. If accepted, participation requires that the student be enrolled full time at the school. There are two Fine Arts Concentrations: **Performing Arts** (band, chorus, dance, orchestra, and theatre) and **Communicative Arts** (visual arts, video broadcasting, and journalism.) There are seven fine arts courses plus humanities required in the Fine Arts Magnet Program. Student auditions are an additional component of the admission requirements.

To participate in the magnet program, incoming freshmen are required to take eight fine arts courses (two required each year), maintain a minimum of a 2.5 GPA in all academic subjects, and a 3.0 GPA in Fine Arts subjects each year. Failure to meet these requirements could result in probation status for the student. Students in the magnet program are also required to attend and document four (4) Community Cultural Events each semester (plays, concerts, art exhibits, readings, other

performances) as well as document ten (10) volunteer service hours in the community or school each semester.

Northeast High School Focus: Health Sciences



Students participating in the Northeast High School-Health Science Program receive hands-on experience and exposure to the health profession. Expanded science, mathematics, and health curricula, as well as opportunities to shadow and intern with health care professionals are provided through the program. Once students are in the program, they may enroll in postsecondary courses while still in high school as well as train for entry level jobs in the health care field. Patient Care Assistance Programs provide students with the opportunity to be well prepared for post secondary options in the health science field.

International Baccalaureate (IB) Program - Central High School



The IB Program begins with two years of pre-IB curriculum leading to a two year IB diploma program in the 11th and 12th grade. The program includes all academic disciplines: English, mathematics, social studies, science, modern language, and theory of knowledge. The IB program is designed to provide a balanced education to support students in their efforts to be college ready.

Admission to the Central High School IB program is based on school grades, standardized test scores, written tasks, and demonstrated interests. Students apply and are accepted following applicant review by Central High School IB staff.

Requirements for the IB diploma, which is offered in addition to the Bibb County Schools diploma, are structured to meet the entrance requirements of universities throughout the

world. A measure of the IB's success is its recognition for college credit. Credit for individual IB courses is usually granted by universities based on exam results similar to granting Advanced Placement (AP) credit. Students should seek specific information on how these credits are treated with individual colleges and universities. A directory of schools recognizing this credit is available in the IB office.

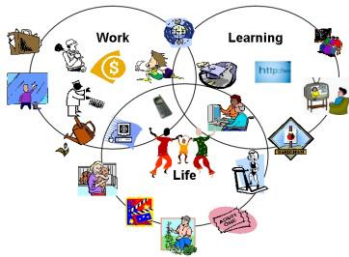
Southwest High School
Focus: Law, Government & Justice

The Law, Government & Justice program at Southwest High School is an enriched program of studies emphasizing a historical and comparative perspective on law and government. Students focus on all aspects of law, identify and develop entry level skills needed for many governmental agencies as possibilities for employment after graduation from high school.



Southwest provides an early opportunity for students who are interested in a career in law to participate in mock trials and learn courtroom procedures. Local attorneys work with students to enrich their knowledge, skill and interest. The Academy also includes the Law and Justice CTAE pathway to prepare students to enter professions in fields such as law enforcement, fire service, criminal justice, criminal investigations, and forensics.

Hutchings College and Career Academy



Hutchings College and Career Charter Academy prepares students to enter the service industry or a post-secondary institution

by providing Career, Technical and Agricultural Education (CTAE) training that encompasses valuable academic, ethical and employability skills. Students from all Bibb County High schools (grades 10 – 12) may obtain three concentrated units of credits in a Georgia CTAE pathway as well as one unit of embedded academic credit by successfully completing a WSHCCA pathway. Additionally, students have the opportunity to complete academic courses for graduation credit which are embedded within its specialized CTAE programs. Hutchings College & Career Charter Academy is located at Dr. Robert J. Williams Complex, 1780 Anthony Rd.

Hutchings College and Career Charter Academy Pathways:

- Audio/video Broadcasting
- Banking/Customer Service
- Construction
- Culinary Arts
- Graphic Communications
- Hospitality, Recreation, and Tourism
- Personal Care Service-
Cosmetology/Barbering
- Teaching as A Profession
- Therapeutic Service – Patient Care
(Nursing)

After selecting the pathway that they would like to complete, students combine academic and career studies to prepare for careers in their chosen field.

In addition to Science and CTAE school labs, Hutchings students also participate in clinical experiences, cooperative education, internships, apprenticeships and/or school based enterprise.

OTHER SPECIALIZED HIGH SCHOOL PROGRAMS (Non-magnet)

School of International Studies – Rutland High School

The School of International Studies at Rutland High School is a four year program designed to accelerate top students reaching their full potential. During the program, students will take at least six Advanced Placement classes; donate time and effort to various campus and community service projects; research, present and defend original research and interact with students from other countries.

JROTC

There are Air Force JROTC units at Howard, Southwest and Westside High Schools, an Army JROTC unit at Central and Northeast High Schools and a Marine JROTC unit at Rutland High School. **Students who earn three Carnegie units of credit for JROTC fulfill the Physical Education graduation requirement.** Note: JROTC courses include Comprehensive Health and Physical Education Rule requirements as stated in State Board of Education Rule 160-4-2-.12.

ONLINE LEARNING

The Bibb County School District recognizes the importance of putting technology into the hands of students, and one aspect of this goal is allowing students to work through classes in the online forum of Georgia Virtual School.

In compliance with Senate Bill 289, online Bibb County courses can be accessed through Georgia Virtual School.

Procedures

Recognizing the need for students to be ready for this type of learning, students interested in taking a course through Georgia Virtual should adhere to these procedures:

1. Read the information on the Georgia Virtual website, **www.gavirtualschool.org**. Pay close attention to deadlines in the Georgia Virtual process as well as the list of courses offered. Check this website often, as the information may change as the semester progress.

2. Take the technology readiness survey. Print the results to bring to the meeting below.
3. Make an appointment for a meeting with the school counselor. Parent attendance at this meeting is encouraged.
4. If all parties agree to the Georgia Virtual setting, the Enrollment Agreement is signed, and the student then registers for the Georgia Virtual class.

The Georgia Virtual class can be taken at home through the timeframe of first or seventh period. In addition, there may be a limited number of seats available at each high school for students to take a Georgia Virtual class at school during the school day.

The school system incurs fees for Georgia Virtual classes that are not passed on to the student. **In the event of an extenuating circumstance where a student might be given special permission to drop a Georgia Virtual class, the parent must provide to the district the reimbursement of all costs associated with the course.**

If the Georgia Virtual School online course is taken in lieu of any of the regular school day instructional periods, then the school will pay for the course. **If a Georgia Virtual School online course is chosen in addition to the regular school day instructional periods, (beyond seven classes in the fall or spring semester), the parent will pay for the course.**

ALTERNATIVE HIGH SCHOOL PROGRAM

Students who attend Bibb County Schools and exhibit behavior which warrants removal from the regular school system may be placed in an alternative program. Placement will result when students are evaluated through an evidentiary or administrative review process. The School of Opportunity, Achievement and Results (SOAR) is designed to serve as a non-traditional learning environment which allows students, who have a lengthy suspension or who are expelled from the regular school

setting, the opportunity to attend school. The campus is located at the William s. Hutchings Building (Martin-Whitley Educational Complex, 2011 Riverside Drive).

SOAR requires all students to follow policies, guidelines and procedures as outlined in the "Code of Student Conduct". This includes the alternative school uniform policy, increasing academic performance, and sustaining or improving attendance. The SOAR program is staffed with Georgia certified teachers as well as support staff that provides classes for students who have exceptionalities (PEC). The student that successfully completes the requirements while attending the alternative program will go through a transitional assessment to determine his/her readiness for re-entry into a regular school setting.

PERSONALIZED LEARNING CENTER (PLC)

The PLC gives students a non-traditional environment where they can recover and accrue credits at an accelerated pace and make progress towards graduation. Students interested in the program must apply and be accepted. The PLC serves students from all BCSD high schools.

TWILIGHT SCHOOL

The Twilight School is designed for high school students who need an accelerated path to graduation or desire a smaller, more personalized learning environment. Students attend classes in the evenings to complete coursework utilizing an online instructional program with the assistance of certified teachers. Students in Twilight School are required to complete all Carnegie Units outlined for their cohort as defined by the year they entered high school.

ATHLETIC, CHEERLEADING, AND LITERARY ACTIVITIES ELIGIBILITY

All high schools in Bibb County adhere to the rules of the Georgia High School Association (GHSA). Academic eligibility requirements affect all students who participate in interscholastic athletics, cheerleading, or literary activities. Interscholastic is defined as activities that involve competition between schools and require preparation outside of the regular classroom more than one day per week. Students gain eligibility to practice, perform, or compete for the school in which they are enrolled after they have been certified by the principal of that school, after eligibility forms have been processed by the GHSA office, and after the students have met the standards of academic requirements, age, semesters in high school, residence in the school's service area, and transfer rules.

To be eligible to participate and/or try-out

for a sport or activity, a student must be enrolled full time in Grades 9 -12 inclusive at the school seeking eligibility for that student and must be in regular attendance. For specific eligibility rules go to www.GHSA.net or www.NCAA.org

A student has eight (8) consecutive semesters or four (4) consecutive years of eligibility from the date of entry into the ninth grade to be eligible for athletics.

To be eligible to participate, practice, and/or try out in interscholastic activities, a student must be academically eligible by demonstrating the following:

1. A student is required to pass five (5) Carnegie unit subjects counting toward graduation in the semester immediately preceding participation. (Exception: First semester ninth grade.)
2. A student must be passing current courses in a GHSA member school with a minimum grade of seventy (70).
3. A student taking a multiple-period subject such as a CTAE course for a full morning or afternoon, may count the course for more than one subject. The number of subjects counted will be equivalent to the number of units given.

4. A student participating in junior varsity or "B" team competition must meet all scholastic requirements.

Students gain or lose eligibility on the first day of the subsequent semester. The first day of the fall semester shall be interpreted as the first date of practice for the first sport.

Exception: Students who successfully complete summer school to maintain eligibility become eligible the last day of summer school. A maximum of two (2) Carnegie unit credits earned in summer school may be counted for eligibility purposes.

NOTE: Summer school credits earned in non-accredited home study programs or non-accredited private schools may not be used to gain eligibility. Courses completed after the beginning of a new semester may not be used to gain eligibility for that semester (i.e., night school classes, correspondence courses, etc.) Students and parents should speak with their school's Athletic Director to determine eligibility status.

Age Requirement

Students must not have reached their 19th birthday prior to May 1st preceding their year of participation to be eligible to participate in athletics.

Medical Requirements

Students must have a current physical examination on file at the school **prior** to try-outs, practice or games that approve the student for participation in athletics. Physical exams are considered current if they have occurred within 365 days of the date of the exam *or* taken on or after April 1st for the following school year.

The physical examination must be conducted by a licensed medical physician (MD), doctor of Osteopathic medicine (DO), physician's assistant, or nurse practitioner with the latest edition of the pre-participation physical evaluation form used for the exam. The exam must be signed by a doctor.

Students must have a concussion awareness form, an athletic consent form signed by the parent or legal guardian, and proof of medical insurance on file prior to participating in athletics.

Discipline

A student suspended from school or assigned to the alternative school for violating school rules or for disciplinary reasons will not be allowed to participate in any athletic activity (try-outs, practice, games, etc.) during the period of suspension. The suspension ends when the student is physically readmitted to the classroom. A student may be removed from an athletic team by the team's coach for any behavior deemed detrimental to the team, school, or school system.

Prospective Division I and II athletes should see Section III of this Planning Guide for information as to NCAA Eligibility Center requirements (collegiate participation). Information can also be accessed through www.ghsa.net. <>

Section III:

College and Career Readiness Pathways Planning Guide



USING COLLEGE AND CAREER READINESS (CCR) PATHWAY PLANNING GUIDE

The following steps best describe how to use this section of the CCR Planning Guide to help you plan your high school program:

1. With the help of your counselors, teachers and parents, consider your academic history, career goals, interests, talents, abilities, and plans for education beyond high school.
2. Determine a CCR pathway you are interested in pursuing.
3. Read the description of each program concentration, related curriculum, programs of study, and occupations.
4. Choose the program concentration that closely matches your area of interest.
5. Consult the appropriate staff member for guidance, such as your counselor.

College and Career Readiness Pathways

A College and Career Readiness Pathway is a coherent sequence of three or four courses that includes rigorous content leading to college and work readiness in a focused area of student interest. These pathways are organized under program concentrations.

Advanced Academics

This pathway is available in: English Language Arts, Mathematics, Science, and Social Studies.

Fine Arts

The Fine Arts pathway is available in: visual arts, theatre, dance, music, or journalism.

World Language

The World Language pathway is available in any of the state approved World Languages. Bibb County currently offers French and Spanish. Others are available through Georgia Virtual School.

Career Technical & Agriculture Education

There are 17 different career clusters in CTAE. For a detailed list see Appendix B. All Pathways are **not** available at every Bibb County High School and may change as additional courses are added or deleted.

FREQUENTLY ASKED QUESTIONS

When and how do schools prepare students to choose a College and Career Readiness pathway?

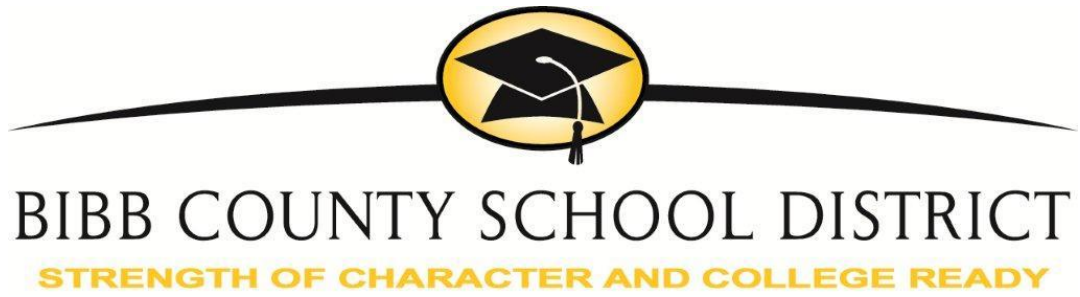
Beginning in elementary school, students will be introduced to the concept of college and career readiness pathways. At the end of 8th Grade or beginning of 9th Grade, students will be asked to make an initial choice of a pathway on which to focus. The district's approach to career development includes activities to assist students in making this choice.

Will students be locked into one pathway?

No. However, students should commit to a pathway by the end of 9th grade in order to be able to schedule the desired courses for pathway completion leading to graduation.

Students and parents must plan ahead to include the electives they may need. A student's career pathway should be determined in consultation with parents, teachers, and counselors.





Section IV:

Planning Beyond High School



The Postsecondary Planning Calendar

| | |
|--|---|
| <p style="text-align: center;">9th grade</p> <ol style="list-style-type: none"> 1. Maintain an academically rigorous course of study. 2. Update your GA Futures account. 3. Register for the SAT and/or ACT online. 4. Register for a GCIS account. 5. Meet with counselors to revise your Individual Graduation Plan. | <p style="text-align: center;">10th grade</p> <ol style="list-style-type: none"> 1. Plan to take elective courses that are related to your career interest and visit some job sites. 2. Plan to take the Preliminary SAT (PSAT) which is given to all 10th grade students in the fall of their sophomore year at no cost. (Check with counselors prior to October regarding the date.) The PSAT is given once a year. 3. Take the PSAT to determine areas of academic strength and weakness. 4. Continue to update your GA Futures account. 5. Meet with your counselor to decide if you should take the SAT or ACT; especially if enrolled in AP, IB or advanced level courses. |
| <p style="text-align: center;">11th grade</p> <ol style="list-style-type: none"> 1. Take the PSAT/NMSQT during your junior year to qualify for National Merit Scholarship and other scholarship competitions. (Students must pay to take the PSAT). Check with counselors prior to October regarding the PSAT date. Juniors must register to take the PSAT. 2. Take the SAT and/or ACT in the spring. Check postsecondary catalogs, college websites or www.GAFutures.org to determine which test is required for admission. 3. Visit the high school counselor regularly. The counselor will guide students in the exploration of careers and postsecondary education possibilities and the application process. Take advantage of books, videos, and catalogs in the counseling office and Career Resource Center as well as the library and Internet. 4. Begin to visit college and university campuses. 5. Register with the NCAA Clearinghouse in the spring and send an official transcript if interested in an athletic scholarship in a Division I or II school. 6. Begin the process for military appointments. 7. Consider ACCEL/Dual Enrollment/Move On When Ready 8. Continue to update your GA Futures account. | <p style="text-align: center;">12th grade</p> <ol style="list-style-type: none"> 1. Maintain an academically rigorous course of study. 2. Meet with counselor to confirm graduation eligibility (graduation verification). 3. Continue to update your GA Futures account. 4. Listen to announcements concerning postsecondary representatives' visits, College and Career Fest, scholarship information, and test registration dates. 5. Retake the SAT or ACT in early fall to improve scores. 6. Select postsecondary and technical schools. 7. Make contact with each postsecondary choice requesting scholarships, applications, catalogs, and a financial aid application. 8. Submit application, application fee, and high school transcript to at least two colleges. Prospective Division I or II athletes must send final transcript to the NCAA Clearinghouse in May. 9. Obtain Federal Student Aid Form (FAFSA). Private institutions may require additional forms. 10. Visit postsecondary institutions of choice. 11. Finalize postsecondary choices. |

PROGRAMS FOR POSTSECONDARY STUDENTS



Adequate preparation for postsecondary level work requires a concerted effort by teachers, parents, and students. Just as the level of difficulty increased dramatically between middle school and high school, so do the demands increase from high school to the postsecondary level.

In order to be prepared to do well at the post-secondary level, students should work beyond the minimum requirements to receive a high school diploma. Courses recommended for success in post-secondary education are set by the Georgia Board of Regents, the Technical College System of Georgia, and the Georgia Department of Education. Students who excel at the post secondary level generally have excelled in a more challenging and rigorous program of study in high school. Whatever your program – do your best work!

Dual enrollment with Post-Secondary Institutions - The University System of Georgia and the Technical College System of Georgia recognize the need to provide academically talented high school students with opportunities for acceleration of their formal academic programs. This recognition has led to the re-development and continuous support of the Move On When Ready Program (DE).

Students who are interested in dual enrollment or early graduation may be eligible for funding under ACCEL, the State of Georgia's admission program. Students who are interested should see their guidance counselor or consult the Director of the ACCEL / DE Programs at the Georgia Department of Education. ACCEL funding will not affect a student's HOPE award.

To participate in the re-designed DE program (July, 2015), a student must be enrolled in an

accredited public or private high school in Georgia or home study program operated in accordance with O.C.G.A. 20-2-690 (c).

Dual Enrollment

In accordance with Senate Bill 132 and Senate Bill 2, Move on When Ready (DE) is Georgia's dual enrollment program that allows high school students (9th – 12th) the opportunity to earn college credit while working on their high school diploma. The new DE program now covers tuition, mandatory fees and required textbooks. The DE program is easier for students, parents and schools to understand. It is streamlined with one funding source and one set of eligibility requirements and regulations. In addition, DE aims to expand dual enrollment opportunities by increasing the number of courses students can take for college credit and removing financial barriers to student participation. The goal of DE is to increase college access and completion, and prepare students to enter the workforce with the skills they need to succeed. (*Georgia Student Finance Commission July, 2015*) Students are still responsible for meeting all local graduation and End-of-Course assessment requirements.

This program is funded by the Georgia Lottery and administered by the Georgia Student Finance Commission. The program allows students to apply, be accepted, and then pursue postsecondary study at approved public and private colleges and technical colleges while receiving dual high school and college credit for courses successfully completed. Earning college credits while still in high school may enable students to graduate early and/or possibly even earn an associate degree, diploma or certificate. Approved courses for DE are listed in the DE Approved Course Directory. Approved classes may include degree level or non-degree level courses in the five main academic areas (English, math, science, social studies and foreign language) as well as electives, career, technical and agricultural offerings.

Students must take the End-of-Course Assessment in order to receive Carnegie Units for the courses requiring the EOC Assessment. A student must meet certain requirements to maintain extracurricular eligibility and eligibility for honor graduate, valedictorian, salutatorian, etc. Consult local school counselors for details.

SB 132 – DE Program

High school students may enroll while in grades 9 – 12. Eligible students will earn dual credit for the course(s) taken. Courses must be selected from the DE Course Directory.

SB 2 – New High School Graduation Option

Students must complete at least the following state required high school courses or their equivalent on their high school campus: Health & PE, 2 English Courses, 2 Math Courses, 2 Science Courses, 2 Social Studies Courses. Students must also take the associated EOC test for each subject. Upon completed the 9 previously stated courses, eligible students may enroll at a TCSG or USG institution to complete an associate degree, technical diploma or two technical certificate programs in a career pathway. This includes all training prerequisites for any state, national, or industry occupational certifications or licenses required to work in the field. Upon completion of all stated coursework, student is awarded a high school diploma and a college credential.

For further detailed information about the new Move On When Ready Program, please visit these sites, or see your guidance counselor:

<https://tcsge.edu>

www.usg.edu

www.GAfutures.org

www.gsfc.georgia.gov

Early Admissions

Any accelerated student who has fulfilled all Bibb County School's graduation requirements may apply to college at the beginning of his/her senior year or earlier per the Early Graduation

Board Policy. The student must also satisfy all testing requirements, including the state mandated Georgia Milestones. A student who applies for early admissions must follow the admissions procedures of each college to which he/she chooses to apply. Early admission cases do not occur very often and are handled on a case-by-case basis.

Advanced Placement (AP) Classes

Postsecondary level classes are taught at the high school during the regular high school day. A national exam is given at the end of the school year (even if the course is completed in December) and graded by readers employed by the College Board. Many postsecondary institutions either award postsecondary credit for successfully completing an AP exam or allow a student to exempt certain courses. Some postsecondary institutions do not honor AP credit. The required exam is funded by Bibb County Schools.

IB (International Baccalaureate) Classes

The International Baccalaureate (IB) offers a high quality program of international education to a worldwide community of schools. There are more than 602,000 IB students at 2,257 schools in 126 countries. The International Baccalaureate (IB) Diploma Program is a challenging two-year curriculum, primarily aimed at students aged 16 to 19. It leads to a qualification that is widely recognized by the world's leading universities. Participation is limited to students accepted into an approved IB program.

Work-Based Learning Programs

Work-based learning programs allow students to receive course credit for supervised technical experiences in area businesses. Work-based learning experience includes apprenticeships, cooperative education, and internships. Local school coordinators will help students connect what they have learned at school with what is learned in the workplace. See local school personnel for details.



POSTSECONDARY ADMISSION STANDARDS

Applicants to the Board of Regents schools will be considered for admission **based on their Freshman Index (FI)**. The Freshman Index is a formula using the SAT scores and the Grade Point Average (GPA) in college-preparatory courses (CPC). CPC courses are taken in language arts, mathematics, science, social studies, modern/classical language, humanities, and fine and performing arts. Students with any course deficiencies in the five areas of the CPC will not be admissible to research universities, regional universities, or state universities. Depending on their other academic qualifications, some of these students will be admissible to two-year colleges where they will be required to take additional courses to make up for CPC deficiencies and/or learning support courses. The formula used by the Regents Colleges and Universities to calculate a student's Freshman Index is as follows:

FRESHMAN INDEX

The Freshman Index (FI) = $500 \times (\text{HSGPA}) + \text{SAT I Critical Reading} + \text{SAT I Math}$ Or
 $\text{FI} = 500 \times (\text{HSGPA}) + (\text{ACT Composite} \times 42) + 88$

The minimum FI required for admission to a research university is 2500; comprehensive university is 2040; state university is 1940; and, state college requiring SAT/ACT is 1830.

Institutions may set higher requirements for admission. Students meeting the minimum FI and

test score requirements are not guaranteed admission.

The Georgia Board of Regents strongly urges students with college plans to take as many college preparatory courses as possible

Research Institutions www.usg.edu

Georgia Institute of Technology
Georgia State University
University of Georgia

Regional Institutions www.usg.edu

Georgia Southern University
Valdosta State University

State Universities www.usg.edu

Albany State University
Armstrong State University
Augusta University
Clayton State University
Columbus State University
Fort Valley State University
Georgia College & State University
Georgia Southwestern State University
Kennesaw State University
Middle Georgia State University
Savannah State University
Southern Polytechnic State University
University of North Georgia
University of West Georgia

State Colleges www.usg.edu

Abraham Baldwin Agricultural College
Atlanta Metropolitan State College
Bainbridge State College
College of Coastal Georgia

Dalton State College
Darton State College
East Georgia State College
Georgia Gwinnett College
Georgia Highlands College
Gordon State College
South Georgia State College

Two-Year Technical Institutes & Colleges
www.tcsq.edu

Albany Technical College
Athens Technical College
Atlanta Technical College
Augusta Technical College
Central Georgia Technical College
Chattahoochee Technical College
Coastal Pines Technical College
Columbus Technical College
Georgia Northwestern Technical College
Georgia Piedmont Technical College
Gwinnett Technical College
Lanier Technical College
North Georgia Technical College
Oconee Fall Line Technical College
Ogeechee Technical College
Savannah Technical College
South Georgia Technical College
Southeastern Technical College
Southern Regional Technical College
Southern Crescent Technical College
West Georgia Technical College
Wiregrass Georgia Technical College

MINIMUM SYSTEM STANDARDS

Technical Institutes & Colleges offer 3 programs; **Certificate, Diploma** and **Degree**.

Certificate and Diploma programs require: High School Diploma or GED, ACCUPLACER Assessment, ASSET or Compass Test may be required upon admission.

Degree programs require: High School Diploma or GED or one of the following: SAT- 480 Critical Reading/440 Math

or ACT- 21 English/19 Math or ACCUPLACER Assessment, ASSET Test or Compass Test may be required upon admission.

Note: the ACCUPLACER assessment is being used by technical colleges in Georgia and other 2 year colleges across the country to assess student college readiness in Reading, English and Math.



FINANCIAL ASSISTANCE

Postsecondary institutions including colleges, universities, technical, secretarial and specialty schools administer certain major financial aid programs. Upon acceptance, or after January 1 and before February 15, contact the College Financial Aid officer to request the appropriate financial aid form and to obtain additional scholarship information. These forms are used to determine the distribution of loans, grants, scholarships and jobs for incoming students. Some post-secondary intuitions have early scholarship deadlines. Students will need to check with the college/university of interest for scholarship deadlines.

Students need to contact their postsecondary institution for information about campus-based awards. Students need to contact individual departments if they have strong interests or talents in that area to request information and special scholarship offerings.



Types of Financial Aid:

1. **Loans:** A loan is money that you borrow and must repay with interest to the lender.
2. **Grants:** Money that is awarded as financial aid that does not have to be repaid. To apply for grant money, you must complete the appropriate financial aid form.
3. **Scholarships:** There are numerous scholarships available to Bibb County students. Students should receive announcements regularly regarding the availability of scholarships and the criteria for selecting scholarship recipients. Many scholarships are based on some combination of leadership, financial need, and/or academic achievement. For entering freshmen, high school averages and SAT/ACT scores are considered and in many cases, volunteer service.

Why Should You Volunteer?

Students are strongly encouraged to seek and participate in volunteer opportunities. Volunteering will help students gain new experiences and insights while serving the community and networking with others. Some scholarship programs require volunteer hours as part of their application process. Volunteering may open the door for many scholarship opportunities.

4. **Post-secondary Work-Study:** Postsecondary Work-Study Programs provide jobs for students who show financial need and who must earn part of their educational expenses. This is a federal program administered by the college's financial aid office. To apply, complete the college's application for financial aid.

Georgia State Lottery Funded Resources:

- **HOPE Grant** - Helping Outstanding Pupils Educationally is a grant funded

by the Georgia Lottery. For all Georgia high school graduates who attend technical colleges and institutes pursuing diploma or certificate programs, the HOPE grant funds most of a student's expenses. No grade point average is required, but students must meet entrance requirements of the postsecondary institute to which they apply.

- **HOPE Scholarship** - Helping Outstanding Pupils Educationally is a four year scholarship program funded by the Georgia Lottery. The HOPE Grant funds for tuition fees in degree programs at any Georgia public or private college or university for Georgia residents who meet certain criteria. Keep up to date on HOPE and other student financial aid programs available from the Georgia Student Finance Commission by visiting the website at www.GAfutures.org or by calling 1-800-505-GSFC.
- **Zell Miller Scholarship Program** - a program for students who have demonstrated academic achievement and are seeking a college degree. To become eligible a student must graduate from an eligible high school with a 3.70 GPA and a minimum score on the SAT/ACT.
- **HOPE Career Grant** – formerly Strategic Industries Workforce Development Grant, is a grant funded program that awards funding to eligible students enrolled in certain high demand certificate and diploma programs at a University System of Georgia (USG) or Technical College System of Georgia (TCSG) school. Students participating in dual enrollment are not eligible. Approved programs and award amounts are available at www.GAfutures.org

Trade Five Skills for Higher Learning



Trade Five is a state-wide education awareness initiative, designed to promote the well-paying and exciting careers that exist within Georgia's skilled trade industries. Trade Five promotes career opportunities within the following areas:

- Logistics
- Manufacturing
- Telecommunication
- Energy
- Construction

Georgia students have the opportunity to further their education in the skilled trades by applying for the Trade Five Scholarship. For more information, visit:

www.GeorgiaTradeFive.com



Financial Aid and Scholarship Information Web Sites

| | |
|--|--|
| www.GAFutures.org | GAFutures- Helping Students Plan, Apply, and Pay for college |
| www.gcic.peachnet.edu | Georgia Career Information Systems Career Inventory |
| www.collegeboard.org | Access to PSAT/SAT information and on-line test registration |
| www.act.org | American College Testing (ACT) & Compass information |
| www.gsfc.georgia.gov | Georgia Student Financial Commission's home page for the HOPE Scholarship and other Georgia student financial aid programs |
| www.nasfaa.org | National Association of Student Financial Aid Administrators |
| www.ed.gov | U.S. Department of Education |
| www.fastweb.com | Access to Fast Web database of 400,000 private scholarships |
| www.finaid.com | A central site to link sources of scholarships, colleges, and special interests |
| www.fafsa.ed.gov | Access to the Free Application for Federal Student Aid registration |
| www.bls.gov/ooh | Occupational Outlook Handbook |
| www.myfuture.com | Resumes, college information, etc. |
| www.petersons.com | College rankings |
| www.usnews.com | College Information |
| www.kaptest.com | Information on the SAT and the ACT |
| www.scholarships.com | Information on scholarships-updated daily |
| www.usg.edu | Information about all 4 year colleges and universities in Georgia |
| www.tcsg.edu | Information about all technical colleges in Georgia |

Eligibility for Collegiate Athletics

If you wish to participate in NCAA Division I or II athletics, you need to be certified by the NCAA Eligibility Center. Students must qualify academically and be cleared as an amateur student-athlete. Recent changes in the process only allow registration to be done online at www.eligibilitycenter.org.

Registration requires a credit or debit card to cover the fee. The cost can be waived if you received a fee waiver for the ACT or SAT. (See your counselor for details.)

What are the requirements?

The NCAA Eligibility Center took over operations for the NCAA Initial-Eligibility Clearinghouse in November 2007. The Eligibility Center certifies the academic and amateur credentials of all students who want to play sports at an NCAA Division I or II institution as freshmen.

College bound student-athletes first entering an NCAA Division I or II college or university on or after August 1, 2016, **will need to meet new academic requirements** in order to receive athletic scholarships, practice or compete during their first year

| Full Qualifier Division I | Full Qualifier Division II |
|--|--|
| <p>16 Core Courses</p> <ul style="list-style-type: none"> • 4 years of English • 3 years of Mathematics (Algebra I or higher) • 2 years of natural/physical science (1 year of lab if offered by high school). • 1 year of additional English, mathematics or natural/physical science • 2 years of social science • 4 years of additional courses (from any area above, foreign language or comparative religion/philosophy) | <p>16 Core Courses</p> <ul style="list-style-type: none"> • 3 years of English • 2 years of mathematics (Algebra I or higher) • 2 years of natural/physical science (1 year of lab if offered by high school) • 3 years of additional English, mathematics or natural/physical science • 2 years of social science • 4 years of additional courses (from any area above, foreign language or comparative religion/philosophy) |
| Minimum Core Course GPA of 2.3 | Minimum Core Course GPA of 2.0 |
| Meet the <i>Competition</i> sliding scale requirement of GPA and ACT/SAT score* | Division II requires a minimum SAT score of 820 or an ACT sum score of 68 |
| *Sliding scale at www.eligibilitycenter.org | For more information, visit the NCAA Eligibility Center website at www.eligibilitycenter.org |
| ** Technical College Readiness English & Math courses may not be recognized by NCAA. Students will need to investigate each case individually with NCAA. | Effective on or after August 1, 2018: Students must earn at least a 2.2 GPA in core courses AND earn an SAT combined score or ACT sum score that matches their core-course GPA on the Division II Competition sliding scale. |

The Eligibility Center must receive official high school transcripts and ACT or SAT test scores in order to determine eligibility. **When you register for the SAT or ACT, use the NCAA Eligibility Center code of 9999** to ensure all SAT and ACT scores are reported directly to the NCAA Eligibility Center from the testing agency. **Test scores that appear on transcripts will not be used.**

Please note that initial eligibility certification pertains only to whether or not you meet the NCAA requirements for participation in Division I or II institution.

Students should ask their coach, athletic director, or guidance counselor about any new NCAA requirements or contact the NCAA National Office at 317-917-6222 or visit their website at www.ncaa.org

What if I've been "home-schooled"? If you have been "home-schooled" during all of grades 9 through 12, you **must** register with the NCAA Eligibility Center. Your eligibility status will be determined by the NCAA. All home-school requirements can be viewed at www.eligibilitycenter.org. If you attended a "traditional" school for some parts of grades 9 through 12, you are required to register with the Eligibility Center.

What will the EC provide to those institutions that are recruiting me? The EC will send your eligibility status to any Division I or II institution that requests it. Please note that the EC will not send your eligibility information at your request; rather, the institution must make the request for that information. Additionally, if no member institution requests your eligibility status, a final certification decision may not be processed.

POSTSECONDARY ADMISSIONS TESTING

Since different colleges, universities, and the technical institutes have varying admission policies, students must carefully check into the admission requirements for institutions to

which they plan to apply. The school counselors can help with details of registering to take the various tests.

It is recommended that most students take the SAT and/or ACT no later than the spring of their junior year and again the fall of their senior year. Some students find that they do much better on one test than the other. Remember that rigorous courses taken in high school contribute to achieving a successful score on the SAT and ACT.

Special Accommodations

Students with a documented disability may be eligible for special accommodations on the SAT Program Tests (PSAT, SAT Reasoning Test, and SAT Subject tests) or ACT tests. Arrangements can be made if you need adjustments to the test setting, such as wheelchair accessibility or seating where you can lip read; or if you need other accommodations such as a printed copy of spoken directions, or access to snacks or medicine due to a medical condition. To receive test accommodations, you need to apply for and receive approval. Parents should meet with their child's counselor for further information. All approvals are made by the testing organization, and not the local district.

Fee Waivers

Fee waivers are available for both SAT and ACT tests. A student must attend high school as a junior or senior in the United States, U.S. territories, Puerto Rico, or Canada, and meet at least one indicator of economic need. Ask your counselor for more information.

Preliminary Scholastic Assessment Test (PSAT/NMSQT)

What is this test?

The PSAT/NMSQT/PSAT 10 is a shorter version of the Scholastic Assessment Test (SAT). It consists of 2 hours and 45 minutes of Evidence-Based reading and mathematics sections. A writing section is included on the assessment. This is the



qualifying test for the National Merit Scholarship Program as well as the National Achievement Program for African American Students.

Who should take the test?

The PSAT is good preparation for the SAT. The state of Georgia pays for all 10th grade students to take the test. Please note: **only 11th Grade PSAT scores can be used to qualify for the National Merit Scholarship Program.**

For these scholarship programs, 11th Grade PSAT scores are a requirement for being considered. PSAT is sometimes linked to eligibility for other scholarship opportunities. **Students who take the PSAT as an 11th Grader must pay the registration fee.**

When is the test given?

The PSAT/NMSQT is given in October. Students should ask their counselor for the specific date.

Where is the test given?

The PSAT is given at each high school on the Wednesday test date.

How do students apply to take the test?

You will receive information at your school concerning the PSAT. There is no charge to 10th grade students. Students are given a booklet containing a practice PSAT which should be studied carefully before the test date.

How are scores reported?

The scores are returned to the local high school along with an individual REPORT OF STUDENT ANSWERS. This report indicates the correct answers for each item on the test and the answers each student actually gave. In addition to the score report, the student also receives a test booklet so that items missed can be carefully reviewed. The scores for reading and mathematics are between the 320 – 1520 for the total score, 160 – 760 for each of the two section scores.

National Merit Scholarship Qualifying Test (NMSQT)

What is this test?

This is the same test as the PSAT. A selection index score is derived from the PSAT score. The selection index scores are used each year to identify the top one-half of one percent of students who expect to graduate the following year in every state. These students are called “National Merit Semi-Finalists” and may become “Finalists” in the National Merit competition. To qualify as a finalist, each student must make a comparable score on the SAT Reasoning, must have made good grades in high school, and must have the endorsement of his/her principal.

Students must take PSAT/NMSQT in October of their **junior year** to qualify for this program – even if they take the PSAT 10 as a sophomore. The names, but not the scores, of the students who become semi-finalists are published by the National Merit Corporation and are distributed nationwide.

To obtain the selection index, the student’s verbal score is doubled and added to the mathematics score, with the range from 60 to 240. The qualifying score for the National Merit Semi-Finalist varies from state to state. It changes from year to year depending on the composition of each year’s junior class statewide.



SAT Reasoning Test

What is this test?

The SAT is a nationally-normed post secondary admission test. The University System of Georgia and the Technical College System of Georgia accept the SAT or ACT. The SAT consists of the following three parts: evidence-based reading, writing/language, and math. The essay is optional. This assessment requires approximately 3 hours of testing time.

Who should take the test?

Students should consult websites or catalogs for colleges where they are applying and determine if the institution of their choice requires the SAT. Georgia colleges will accept the SAT or ACT. For more information on admission requirements, visit www.GAfutures.org

When is the test given?

In Georgia, the SAT is given in August, October, November, December, March, May and June.

Where is the test administered?

The SAT is administered only at official College Entrance Examination Board Test Centers. Students can select one of several other test centers in Bibb County Schools or in the Macon area. Students should consult the Student Bulletin for exact dates and test centers or on-line at www.collegeboard.com for test dates and locations.

How do students apply to take the test?

Registration information is on-line. Students must submit the application and payment directly to the Admissions Testing Program of the College Board in Princeton, New Jersey. The registration should be mailed or completed on the internet by the deadline which is approximately five weeks before the test date, or as late as three weeks before the test date with payment of the late fee. The exact test dates, registration deadlines, and fees are listed in the Student Bulletin or on line at www.collegeboard.com. A fee must always accompany the registration.

How are the scores reported?

SAT scores are reported directly by mail to the students. Each high school has a school code number. The students fill in this number on the registration form. This enables the student's high school to receive a copy of the scores. SAT scores are also sent directly to four institutions of the student's choice, indicated by

assigned numbers in the Student Bulletin. Students can request that scores be sent to additional colleges or organizations by the payment of an additional fee. Scores are only sent from the SAT testing agency.

Can the SAT be taken more than once?

Yes, the SAT can be taken as frequently as a student desires. Some students have improved their scores by taking the test more than once. Since score reporting is cumulative, score reports will include scores up to five previous test dates.

What is the best preparation for the SAT?

The best preparation for the SAT is to study a wide variety of academic courses and read extensively. Most experts agree taking rigorous courses in high school in English, math, science, social studies, and modern language is the best preparation. The College Board and Khan Academy have teamed up to provide free, personalized SAT study resources for all students. For more information and to view video lessons, visit: www.khanacademy.org/sat

SAT Subject Tests What are these tests?



Achievement Tests are one-hour tests which measure the student's knowledge of a particular subject and the ability to apply that knowledge. Tests are available in 20 specific subjects.

Who should take them?

SAT Subject Tests should be taken by any student who intends to apply to a post secondary institution that requires them. Students should check the college catalog.

When are they given?

They are given seven times a year for most tests; once a year for others. Other test dates for Foreign Language, etc. can be obtained by calling 1-888-728-4357. (See the Student Bulletin.) The Achievement Tests are given on the same day as the SAT Reasoning. See

www.collegeboard.org for test dates and locations.

Where are they given?

They are given at the same centers as the SAT Test.

How do students apply to take them?

Students use the same applications and procedures as stated for the SAT Reasoning.

How are scores reported?

Scores are reported in the same manner as the SAT Reasoning, using the same range.

SAT Testing Accommodations

Effective January 2017, the College Board used a new streamlined process for requesting testing accommodations for students. The new review process will allow automatic approval accommodations in more situations. Students needing testing accommodations as stated in their IEP/504 Plan must meet with their school counselor at the beginning of the school year (August) to start the accommodations process. (www.collegeboard.org)

What is the ACT?

The ACT is a test similar to the SAT but with a different format. All Georgia Public postsecondary institutions accept this test. Many states outside of Georgia require it for admission. It consists of four tests: English, mathematics, reading, and science reasoning.



Who should take the test?

Students should consult either the postsecondary catalog or handbook to determine if the institution of their choice requires the ACT. Georgia institutions will accept the SAT or ACT (see this section under SAT).

When is the test given?

The ACT is given in September, October, December, February, April, June, and July.

Where is the test administered?

It is given only at designated test centers. This information is in the application packet. There are centers in Bibb County Schools and in the Macon area.

How do students apply to take the test?

Registration information is on-line. Applications must be submitted before the published deadline. A fee must accompany the application. For more information, visit www.act.org

How are scores reported?

Test results are sent directly to the high schools and are mailed to the students. Scores are reported for each subject area and a composite score is reported, which is an average of the four scores. The range is from 1 to 36.

ACT Testing Accommodations

Students who have documented disabilities may be provided reasonable accommodations appropriate to their diagnosis and needs. ACT has established policies regarding documentation of a student's disability. Students needing testing accommodations as stated in their IEP/504 Plan must meet with their school counselor at the beginning of the year (August) to start the accommodations process. (www.act.org)

Advanced Placement Tests (AP)

What are they?

Advanced Placement (AP) Tests measure achievement in freshman post-secondary level courses taught in the high school, and depending upon examination results, may enable students to receive advanced placement, postsecondary credit, or both when they enter college. They are recognized and accepted by a majority of the colleges and universities in the United States. The tests are three-hour examinations in several disciplines.



Who should take them?

Those students who successfully complete an AP course take the associated test. The Georgia Department of Education will pay for one test for students who are enrolled in AP classes. All tests are free for students who qualify for free or reduced lunch and are enrolled in the AP classes. Since these are postsecondary level courses, they are specifically for the student who is prepared to devote extra time and to give superior effort to meet demanding requirements. Students who feel they have the depth of knowledge required by an AP course may take the test. They must register in advance and pay for the cost of the test.

When are they given?

AP Tests are given in May each year.

Where are they given?

See your AP teacher, test administrator, or school counselor for information about locations.

How do students take them?

The AP teacher gives their students information concerning the procedures for registering and taking the tests. Registration is always in advance of the test date. (Note: Tests are administered at various locations within the district.) Students who require special needs accommodations should indicate need on the registration form.

How are scores reported?

Scores are reported directly to the student, the high school, and the postsecondary institution which the student designates. Scores are on a five-point scale, with five being the highest possible score. Most institutions require a score of three or higher for consideration for course exemption or course credit.

(IB) tests are called External Assessment and are integral parts of each IB course. The External Assessment for each course is set by the International Baccalaureate Organization (IBO) and is administered to all IB students enrolled in each course at the same time. The External Assessments are sent to designated Examiners, who grade sets of Assessments, then forward samples to multiple levels of Moderators who validate the Examiners' grading. Final grade award is made by a grade award committee, and grades are then assigned to each student.

What do they measure?

The IB External Assessments (tests) measure achievement in each prescribed IB course taught during the 11th and 12th grade IB years. Each test is comprehensive, covering material delivered during each full course, which entails two years of study. Examination results collectively determine the awarding of the International Baccalaureate Diploma. Collective and individual course results may also enable students to receive advanced placement, postsecondary credit, or both when they enter college. IB results are generally recognized and accepted at major colleges and universities in the United States and abroad. Each course entails as many as three two-to-three hour examinations.

Who takes the IB examinations?

Only students who are formally enrolled in the International Baccalaureate Diploma program may take the IB exams. Central High School is the only IB Diploma school in the Bibb County school system, so only CHS IB students may take the exams. The exams are administered to students formally registered by the CHS IB Coordinator, and fees are assessed by the IBO. Fees for registration and examinations are paid using funds in the IB budget at Central High School.

International Baccalaureate Tests (IB) What are they?

International Baccalaureate



When are they given?

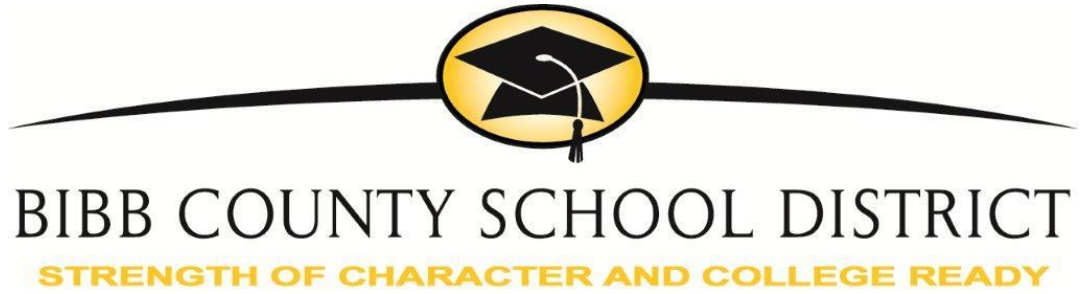
IB External Assessments are given during May each year.

Where are they given?

IB External Assessments are normally given in a secure off-campus testing location in order to ensure prescribed testing conditions and to minimize disruption to the school environment. The location is coordinated by the CHS IB Coordinator.

How do students take them?

The CHS IB Coordinator registers students for the IB exams and pays the examination fees to the IBO in October, for May exams. Special needs are identified at that time and the IBO issues approval for specific accommodations well in advance of the test dates. The IB Coordinator provides each IB student a schedule of testing, and takes testing materials to the testing site. All examinations are written, using test response booklets and answer sheets provided by the IBO.



Section V:

Glossary



Academic Courses: Courses designed to prepare a student for a junior college or four-year college program.

ACCEL: The ACCEL program was revamped in July, 2015. The new program is now Move On When Ready. This program is for high school students attending accredited public or private high schools in the state of Georgia. Students in grades 9 – 12 can participate if they meet all requirements of the program. The program allows students to pursue postsecondary study at approved public and private colleges and technical colleges while receiving dual high school and college credit for courses successfully completed.

ACT: An admission test covering English, reading, science reasoning, and mathematics.

Advanced Placement (AP): A program by which college freshmen may bypass entry-level courses by providing that they have already taken the equivalent in high school. College credit may be awarded if a student earns a certain grade on a specially designed College Board exam at the conclusion of an AP course. AP Courses taught within the Bibb County Schools include English, European History, U. S. History, Comparative Government, American Government, Macro Economics, Micro Economics, Psychology, Calculus, Biology, Chemistry, Physics, Computer Science, Statistics, French, and Spanish.

Career Resource Center: A room located in the high school where students may research various careers, colleges, technical institutes, employment opportunities and military service.

Class Rank: A student's standing based on his or her cumulative Grade Point Average (GPA) or cumulative average as compared with that of other members of the class. In a class of 100, the student with the highest GPA would be Number 1, the lowest Number 100.

College Board: The organization which provides college entrance testing, such as SAT

Reasoning, SAT Subject, TOEFL, PSAT, etc. ETS (Educational Testing Service) is the testing development company employed by the College Board.

College-Level Examination Program

(CLEP:): Administered by the College Board, this program offers a series of general and subject examinations for college applicants who have learned in such non-traditional ways as independent reading, on-the-job training, or correspondence courses.

Core Courses: Courses chosen from English, mathematics, science, social studies, and modern language for a high school diploma.

CTAE: Career, Technical and Agriculture Education.

CTAE Pathways: Pathways are a way to help students focus their learning in high school around an area that interests them.

Cumulative Grade Point Average (CGPA):

Students' CGPA is the average of their entire course GPA's in every high school course they have taken, using 4 for an A, 3 for a B, etc.

Cumulative Record: The complete record of all courses and grades earned. Students' transcripts contain their cumulative record.

Degree: Titles given to college graduates upon completion of a program. A four-year degree is usually a BA (Bachelor of Arts), or BS (Bachelor of Science), a 5th-or 6th-year degree is often an MA (Master of Arts), with a doctoral degree requiring approximately five additional years beyond the BA.

Dual Enrollment/ACCEL: a joint enrollment program (ACCEL) in which students, while continuing their enrollment in high school as a junior or senior, enroll in courses for college credit.

Early Admission: This program allows students to begin college work after their

sophomore year of high school. This program usually is limited to exceptional and motivated students.

Georgia Milestones: The Georgia Milestones Assessments replace the End-of-course tests and are given in grades nine through twelve for the following core subjects: Mathematics (Coordinate Algebra and Analytic Geometry); Social Studies (United States History and Economics/Business/Free Enterprise); Science (Biology and Physical Science), and English Language Arts (Ninth Grade Literature & Composition and American Literature & Composition).

Expected Family Contribution: The amount of college expenses that families and students are expected to pay before any financial aid is awarded.

Free Applications for Federal Aid (FAFSA): A federal government form required by most colleges when applying for financial aid.

Financial Aid: Money which may be derived from a variety of sources (grants, loans, scholarships, or work-study), which helps pay college costs. The “package” of funds is determined by family financial need and the availability of funds.

Financial Need: The difference between the cost of education and what the family or the applicant can reasonably be expected to contribute.

Fee Waiver: The Fee Waiver Form is submitted instead of money when applying for college testing or admission. The form is available to students having a low family income.

General Educational Development Examination (GED): A series of tests that adults take to qualify for a high school equivalency certificate issued by the State. These tests are administered locally at Central Georgia Technical College.

Georgia Scholar Program: A state-sponsored program designed to identify and honor outstanding graduating seniors and provide them opportunities to apply for the Governor’s Scholarship. See your counselor for details.

Honor Graduate: Bibb County High School seniors eligible for the regular high school diploma who have a cumulative grade point average of ninety (90) at the end of the third quarter of their senior year.

HOPE Grant: Helping Outstanding Pupils Educationally Grant is available to residents in Georgia who are attending eligible colleges to earn a certificate or diploma regardless of grade point average or graduation date.

HOPE Scholarship: Helping Outstanding Pupils Educationally is a four-year scholarship program funded by the Georgia Lottery. This program provides funds for tuition fees at any Georgia public or private college, university, or technical institute for Georgia residents who meet certain criteria.

Hospital/Homebound: This program is offered to students who cannot attend in a regular setting due to illness or accident. Students must be absent 10 consecutive school days to be eligible for this service. Consult your local school for the necessary form to enter the program.

Humanities: Courses accepted by the Georgia Board of Regents in meeting their college preparatory curriculum requirements in areas like literature, American sign language (for non-hearing impaired students), AP Computer Science A & AB, psychology, sociology, world geography, business law, and the fine and performing arts including band, orchestra, chorus, visual arts, dance, and drama.

International Baccalaureate Program: The IB Program is a rigorous comprehensive curriculum for highly motivated college bound

students. Students who complete the program receive the IB diploma in addition to the diploma issued by the State of Georgia.

DE: See ACCEL

Needs Analysis: This is a technique used to estimate a student's need for financial assistance to help meet educational expenses. It consists of two major components: (1) estimating the family's ability to contribute to educational expenses, and (2) estimating the student's educational expenses.

Official Transcript: High school transcript containing the school seal that is issued and certified by the school registrar.

Prerequisites: Courses, test scores, and/or grade level that must be completed before taking the next sequential course, grade, etc.

Program Concentrations: Program concentrations represent a grouping of occupations in career clusters as defined by the U.S. Department of Education. Each program concentration includes several career pathways.

Preliminary Scholastic Assessment Test/National Merit Scholar Qualifying Test (PSAT/NMSQT) / PSAT 10: A shortened version of the SAT offered in October for high school sophomores and juniors. To qualify for the National Merit Scholarship, the PSAT must be taken during the junior year.

SAT: A college admission exam measuring verbal and math reasoning in addition to proficiency in Standard Written English.

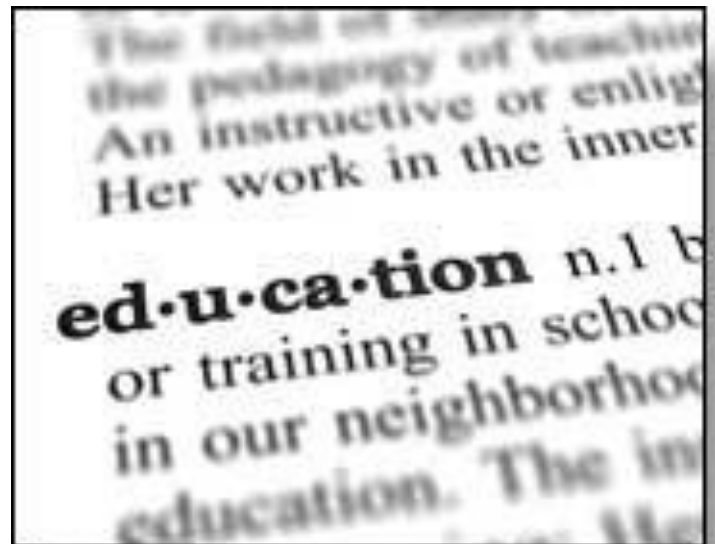
Service-Learning: Service-Learning is a teaching/learning method that connects meaningful community service experiences with Academic Knowledge and Skills, personal growth, and civic responsibility. Service-Learning allows students opportunities to learn through active participation.

Test of English as a Foreign Language (TOEFL): Some colleges and universities require international students to earn a minimum score on this test to take regular courses.

Transfer Courses: College courses giving credit which may be transferred from one college to another.

Tuition: A fee that is paid for instruction in a school, college, or university.

Undergraduate: College student who has not yet received a bachelor's degree.



Appendix A

CCRPI FINE ARTS PATHWAY

| <p>The following courses may be taken in any combination of three courses to comprise the Fine Arts Performing Arts Pathway.</p> | <p>The following courses may be taken in any combination of three courses to comprise the Fine Arts Visual Arts Pathway.</p> |
|---|--|
| <p>Ballet Jazz Dance Modern Dance Dance Composition Theatre Arts/Fundamentals Theatre Arts/Technical Theater Theatre Arts/Advanced Drama Theatre Arts Literature Music Appreciation Beginning Music Theory and Composition Beginning Music Technology Advanced Placement Music Theory Beginning Band Intermediate Band Advanced Band Mastery Band Beginning Orchestra Intermediate Orchestra Advanced Orchestra Mastery Orchestra Beginning Jazz (Music) Intermediate Jazz (Music) Advanced Jazz (Music) Beginning Choral Ensemble Intermediate Choral Ensemble Advanced Choral Ensemble Beginning Instrumental Ensemble Intermediate Instrumental Ensemble Advanced Instrumental Ensemble Beginning Guitar Techniques Beginning Keyboard Techniques (Music) Beginning Mixed Chorus Intermediate Mixed Chorus Advanced Mixed Chorus Mastery Mixed Chorus Beginning Women’s Chorus Intermediate Women’s Chorus Advanced Women’s Chorus Mastery Women’s Chorus Beginning Men’s Chorus Intermediate Men’s Chorus</p> | <p>Visual Arts/Comprehensive Visual Arts/Drawing Visual Arts/Drawing & Painting Visual Arts/ Painting Visual Arts/Ceramics/Pottery Visual Arts/Fibers International Baccalaureate Visual Arts Jewelry and Metal Crafts (Visual Arts) Visual Arts/Printmaking Visual Arts/Sculpture Visual Arts/Photography Visual Arts/Graphics Advanced Placement Studio Art: Drawing Advanced Placement Studio Art: 2D Design Portfolio Advanced Placement Studio Art: 3D Design Portfolio Visual Arts/Art History and Criticism Advanced Placement Art History</p>  |

Appendix B:

CTAE CAREER CLUSTERS/ PATHWAYS

Average salary information and education levels needed for occupations listed below were obtained from the Georgia Department of Labor.

Why take CTAE Courses?

CTAE courses will get you on the fast track to your future. Whatever your plans may be after high school, CTAE courses and career pathways will give you a head start in many technical and professional careers. Our goal is for you to be a success whether you choose to go into the workforce, enlist in the military, go to a technical college, or enter a college or university. Within each Program Concentration listed below you will find career pathways for you to choose. Each career pathway has three to four classes you must take to complete the requirements for your pathway.

CAREER CLUSTER IN AGRICULTURE, FOOD AND NATURAL RESOURCES

Plant and Floral Design System Pathway (NHS)

- Basic Agricultural Science
- General Horticulture and Plant Science (**Prerequisite:** Basic Agricultural Science)
- Floral Design and Management (**Prerequisite:** General Horticulture and Plant Science)



Plant and Landscape System Pathway (NHS & RHS)

- Basic Agricultural Science and
- General Horticulture and Plant Science (**Prerequisite:** Basic Agricultural Science)
- Nursery and Landscape (**Prerequisite:** General Horticulture and Plant Science)

| OCCUPATION SPECIALTIES | LEVEL OF EDUCATION | AVERAGE SALARY |
|---|-----------------------------------|----------------|
| Manager of Landscaping/Lawn Service/Grounds keeping Workers | Work Experience | \$36,483 |
| Pesticide Handler, Sprayer/ Applicator | Moderate-Term On-the-Job Training | \$29,640 |
| Soil and Plant Scientist | Bachelor's Degree | \$56,077 |
| Farm and Home Management Advisor | Bachelor's Degree | \$28,517 |
| Landscape Architect | Bachelor's Degree | \$73,195 |

CAREER CLUSTER IN ARCHITECTURE AND CONSTRUCTION

Carpentry Pathway (Hutchings College and Career Academy)

Dual Enrollment with Central GA Tech

- Industry Fundamentals and Occupational Safety
- Introduction to Construction (**Prerequisite:** Into Fundamentals and Occupational Safety)
- Carpentry I (**Prerequisite:** Introduction to Construction)



CAREER CLUSTER IN ARTS, AV/TECHNOLOGY, AND COMMUNICATIONS

Broadcast & Video Production Pathway Courses (*Hutchings College and Career Academy*)

- Audio and Video Technology Film I
- Audio and Video Technology Film II (**Prerequisite:** *Audio-Video Technology Film I*)
- Audio and Video Technology Film III (**Prerequisite:** *Audio and Video Technology Film II*)

| OCCUPATION SPECIALTIES | LEVEL OF EDUCATION NEEDED | AVERAGE SALARY |
|------------------------------|-------------------------------|----------------|
| Audio & Video Equipment Tech | Long-Term On-the-Job Training | \$40,498 |
| Broadcast News Analyst | Bachelor's Degree | \$57,845 |
| Broadcast Technician | Associate's Degree | \$35,443 |
| Radio & Television Announcer | Long-Term On-the-Job Training | \$34,445 |

Graphic Communications Pathway Courses (*Hutchings College and Career Academy*)

Dual Enrollment with Central GA Tech

- Introduction to Graphics Design
- Graphic Design and Production (**Prerequisite:** *Introduction to Graphics Design*)
- Advanced Graphic Output Processes (**Prerequisite:** *Graphic Design and Production*)

If successful in this class students will graduate with a Design and Media Production Specialist Technical Certificate from Central Georgia Technical College

| OCCUPATION SPECIALTIES | LEVEL OF EDUCATION NEEDED | AVERAGE SALARY |
|----------------------------------|--------------------------------|----------------|
| Printing Machine Operators | On-the-job; Postsecondary Tech | \$33,509 |
| Lay-out workers | On-the-Job Training | \$25,875 |
| Prepress Technicians and Workers | Postsecondary Vocational Award | \$35,443 |

CAREER CLUSTER IN BUSINESS, MANAGEMENT, AND ADMINISTRATION

Entrepreneurship Pathway (*CHS, HHS, RHS, SWS, WHS*)

- Introduction to Business and Technology
- Legal Environment of Business (**Prerequisite:** *Introduction to Business and Technology*)
- Entrepreneurship (**Prerequisite:** *Legal Environment of Business*)



Business and Technology Pathway (*CHS, HHS, NHS, RHS, SWS, WHS*)

- Introduction to Business and Technology
- Business and Technology (**Prerequisite:** *Introduction to Business and Technology*)
- Business Communications (**Prerequisite:** *Business and Technology*)

| OCCUPATION SPECIALTIES | LEVEL OF EDUCATION NEEDED | AVERAGE SALARY |
|---|--|----------------|
| Advertising and Promotion Manager | Bachelor's Degree | \$76,898 |
| Chief Executive | Bachelor's Degree plus work experience | \$155,168 |
| Employment, Recruitment, and Placement Specialist | Bachelor's Degree | \$50,877 |
| Social and Community Service Manager | Bachelor's Degree | \$59,904 |
| Training and Development Manager | Bachelor's Degree | \$79,498 |

CAREER CLUSTER IN EDUCATION AND TRAINING

Early Childhood Education Pathway (RHS, SWHS)

- Early Childhood Education I
- Early Childhood Education II (**Prerequisite:** Early Childhood Education I)
- Early Childhood Education III (**Prerequisite:** Early Childhood Education II)



| OCCUPATION SPECIALTIES | LEVEL OF EDUCATION NEEDED | AVERAGE SALARY |
|---------------------------|-----------------------------------|----------------|
| Elementary School Teacher | Bachelor's Degree | \$46,888 |
| Preschool Teacher | Postsecondary Vocational Training | \$24,419 |
| Kindergarten Teacher | Bachelor's Degree | \$45,969 |
| Special Education | Bachelor's Degree | \$46,358 |

Teaching as a Profession Pathway (Hutchings College and Career Academy)

- Examining the Teaching Profession
- Contemporary Issues in Education (**Prerequisite:** Examining the Teaching Profession)
- Teaching as a Profession Practicum (**Prerequisite:** Contemporary Issues in Education)

| OCCUPATION SPECIALTIES | LEVEL OF EDUCATION NEEDED | AVERAGE SALARY |
|--|--|----------------|
| Postsecondary Education Administrator | Bachelor's Degree plus Work Experience | \$81,328 |
| Secondary School Teacher | Bachelor Degree | \$49,956 |
| Postsecondary Vocational Education Teacher | Bachelor's Degree + Work Experience | \$45,386 |
| MS Special Education Teacher | Bachelor's Degree | \$46,891 |

CAREER CLUSTER IN FINANCE

Financial Management—Services Pathway Courses (Hutchings College and Career Academy, RHS)

- Introduction to Business and Technology
- Banking and Investing (**Prerequisite:** Introduction to Business and Technology)
- Insurance and Risk Management (**Prerequisite:** Business Essentials)

| OCCUPATION SPECIALTIES | LEVEL OF EDUCATION NEEDED | AVERAGE SALARY |
|------------------------------|-----------------------------------|----------------|
| Financial Analyst | Bachelor's Degree | \$80,787 |
| Real Estate Sales Agent | Postsecondary Vocational Award | \$38,334 |
| Actuary | Bachelor's Degree | \$84,822 |
| Securities/Commodities Sales | Bachelor's Degree | \$81,536 |
| Brokerage Clerk | Moderate-Term On-the-Job Training | \$30,597 |

Financial Management—Accounting Pathway Courses (HHS)

- Business Essentials (*Prerequisite: Computer Applications*)
- Principles of Accounting I (*Prerequisite: Business Essentials*)
- Principles of Accounting II (*Prerequisite: Accounting I*)

| OCCUPATION SPECIALTIES | LEVEL OF EDUCATION NEEDED | AVERAGE SALARY |
|--|-----------------------------------|----------------|
| Accountants and Auditors | Bachelor’s Degree | \$54,330 |
| Bookkeeping/Accounting/ Auditing Clerks | Moderate-Term On-the-Job Training | \$29,619 |
| Budget Analysts | Bachelor’s Degree | \$58,698 |
| Tax Preparers | Moderate-Term On-the-Job Training | \$30,285 |

CAREER CLUSTER IN GOVERNMENT AND PUBLIC ADMINISTRATION

JRTOC- Air Force (HHS, SHS, WHS)

- Aerospace Leadership: I
- Aerospace Leadership: II (*Prerequisite: Aerospace Leadership I*)
- Aerospace Leadership: II (*Prerequisite: Aerospace Leadership II*)



JRTOC- ARMY (CHS, NHS)

- JROTC Army Leadership Education 1
- JROTC Army Leadership Education 2 (*Prerequisite: JROTC Army Leadership I*)
- JROTC Army Leadership Education 3 (*Prerequisite: JROTC Army Leadership 2*)

JRTOC- Marines (RHS)

- MCJROTC Leadership Education I
- MCJROTC Leadership Education II (*Prerequisite: MCJROTC Leadership Education I*)
- MCJROTC Leadership Education III (*Prerequisite: MCJROTC Leadership Education II*)

| Occupation Possibilities | Level of Education Needed* | Average Salary* |
|--------------------------|----------------------------|-----------------|
| Enlisted Personnel | On-the-Job Training | \$47,000 |
| Officer | Bachelor’s Degree | \$71,000 |

* Source: <http://usmilitary.about.com>

BUSINESS, MANAGEMENT AND ADMINISTRATION

Entrepreneurship Pathway (CHS, HHS, RHS, SWS, WHS)

- Introduction to Business and Technology
- Legal Environment of Business (*Prerequisite: Introduction to Business and Technology*)
- Entrepreneurship (*Prerequisite: Legal Environment of Business*)



Business and Technology Pathway (CHS, HHS, NHS, RHS, SWS, WHS)

- Introduction to Business and Technology
- Business and Technology (*Prerequisite: Introduction to Business and Technology*)
- Business Communications (*Prerequisite: Business and Technology*)

| Occupation Specialties | Level of Education Needed | Average Salary |
|-----------------------------------|--|----------------|
| Advertising and Promotion Manager | Bachelor’s Degree | \$76,898 |
| Chief Executive | Bachelor’s Degree plus work experience | \$155,168 |

| | | |
|---|-------------------|----------|
| Employment, Recruitment, and Placement Specialist | Bachelor's Degree | \$50,877 |
| Social and Community Service Manager | Bachelor's Degree | \$59,904 |
| Training and Development Manager | Bachelor's Degree | \$79,498 |

CAREER CLUSTER IN HEALTH SCIENCE

Therapeutic Services—Nursing Pathway Courses (*Hutchings College and Career Academy*)

Dual Enrollment with Central GA Tech

- Introduction to Healthcare Science
- Essentials of Healthcare (*Prerequisite: Introduction to Healthcare Science*)
- Patient Care Fundamentals (*Prerequisite: Essentials of Healthcare*)



Therapeutic Services—Sports Medicine Pathway (*NHS*)

- Introduction to Healthcare Science
- Essentials of Healthcare (*Prerequisite: Introduction to Healthcare Science*)
- Sports Medicine (*Prerequisite: Essentials of Healthcare*)

| Occupation Specialties | Level of Education Needed | Average Salary |
|-------------------------------------|---------------------------------------|----------------|
| Registered Nurse | Associate's Degree/ Bachelor's Degree | \$53, 893 |
| Physical Therapist | Master's Degree | \$82,000 |
| Medical and Health Services Manager | Bachelor's Degree + Work Experience | \$74,486 |
| Occupational Therapist | Master's Degree | \$58,427 |

CAREER CLUSTER IN HOSPITALITY AND TOURISM

Culinary Arts Pathway (*Hutchings College and Career Academy*)

Dual Enrollment with Central GA Tech

- Introduction to Culinary Arts
- Culinary Arts I (*Prerequisite: Introduction to Culinary Arts*)
- Culinary Arts II (*Prerequisite: Culinary Arts I*)

| OCCUPATION SPECIALTIES | LEVEL OF EDUCATION NEEDED | AVERAGE SALARY |
|--------------------------------|------------------------------------|----------------|
| Chef and Head Cook | Work Experience | \$31,304 |
| Food Service Manager | Work Experience | \$46,384 |
| General and Operations Manager | Bachelor's Degree +Work Experience | \$87,152 |

Hospitality, Recreation and Tourism Pathway (*Hutchings College and Career Academy*)

- Marketing Principles
- Hospitality, Recreation and Tourism Essentials (*Prerequisite: Marketing Principles*)
- Hospitality, Recreation and Tourism Management (*Prerequisite: Hospitality, Recreation and Tourism*)

| OCCUPATION SPECIALTIES | LEVEL OF EDUCATION NEEDED | AVERAGE SALARY |
|----------------------------------|---|----------------|
| Advertising & Promotions Manager | Bachelor's Degree | \$76,898 |
| Lodging Manager | Work Experience in a Related Occupation | \$56,826 |
| Travel Agent | Postsecondary Vocational Award | \$29,682 |
| Travel Guide | Moderate On-the-Job Training | \$36,005 |

CAREER CLUSTER IN HUMAN SERVICES

Nutrition and Food Science Pathway Courses (CHS, NHS, RHS, SHS, WHS)

- Food, Nutrition & Wellness
- Food for Life (**Prerequisite:** Food, Nutrition & Wellness)
- Food Science (**Prerequisite:** Food for Life)



| OCCUPATION SPECIALTIES | LEVEL OF EDUCATION NEEDED | AVERAGE SALARY |
|------------------------------|---------------------------|----------------|
| Food Scientist /Technologist | Bachelor's Degree | \$55,869 |
| Health Educator | Master's Degree | \$53,290 |
| Dietician/Nutritionist | Bachelor's Degree | \$42,619 |
| Food Service Manager | Work Experience | \$46,384 |

Personal Care Services-Cosmetology (Hutchings College and Career Academy)

Dual Enrollment with Central GA Tech

- Introduction to Personal Care Services
- Cosmetology Services II (**Prerequisite:** Cosmetology Services I)
- Cosmetology Services III for Life (**Prerequisite:** Cosmetology Services II)

| OCCUPATION SPECIALTIES | LEVEL OF EDUCATION NEEDED | AVERAGE SALARY |
|------------------------|---------------------------|----------------|
| Cosmetologist | Associate's Degree | \$26,660 |
| Fashion Photo Stylist | Associate's Degree | \$28,560 |
| Salon Owner/Manager | Bachelor's Degree | \$79,500 |
| Cosmetology Educator | Bachelor's Degree | \$54,390 |

CAREER CLUSTER IN INFORMATION TECHNOLOGY

Web and Digital Design (CHS, NHS, RHS, SHS, WHS)

- Introduction to Digital Technology
- Digital Design (**Prerequisite:** Introduction to Digital Technology)
- Web Design (**Prerequisite:** Digital Design)

| OCCUPATION SPECIALTIES | LEVEL OF EDUCATION NEEDED | AVERAGE SALARY |
|---------------------------------|-----------------------------------|----------------|
| Graphic Designer | Bachelor's Degree | \$44,034 |
| Desktop Publisher | Postsecondary Vocational Training | \$30,680 |
| Computer Specialist | Associate's Degree | \$55,640 |
| Multi-Media Artist and Animator | Bachelor's Degree | \$44,554 |

Programming (HHS)

- Introduction to Digital Technology
- Computer Science Principles (**Prerequisite:** Introduction to Digital Technology)
- Programming, Games, Apps, and Society (**Prerequisite:** Computer Science Principles)
or
- AP Computer Science (**Prerequisite:** Computer Science Principles)

| OCCUPATION SPECIALTIES | LEVEL OF EDUCATION NEEDED | AVERAGE SALARY |
|---|--|----------------|
| Computer and Information Systems Managers | Bachelor's Degree plus work experience | \$101,400 |
| Computer Programmers | Bachelor's Degree | \$73,674 |
| Computer Software Engineers | Bachelor's Degree | \$77,022 |
| Computer System Analysts | Bachelor's Degree | \$74,443 |

CAREER CLUSTER IN LAW, PUBLIC SAFETY, CORRECTIONS, AND SECURITY

Law & Justice Pathway (SHS)

- Introduction to Law , Public Safety, Corrections and Security
- Criminal Justice Essentials (**Prerequisite:** *Intro to Law, Public Safety, Corrections, & Safety*)
- Criminal Investigations (**Prerequisite:** *Intro to Law, Public Safety, Corrections, & Safety*)

Legal Services/-Legal Applications of Law Pathway (SHS)

- Introduction to Law , Public Safety, Corrections and Security
- Essentials of Legal Services (**Prerequisite:** *Intro to Law, Public Safety, Corrections, & Safety*)
- Applications of Law (**Prerequisite:** *Essentials of Legal Services*)

| Occupation Specialties | Level of Education Needed | Average Salary |
|------------------------------------|-------------------------------|----------------|
| Emergency Management Specialist | Long-Term On-the-Job Training | \$41,621 |
| Immigration & Customs Inspectors | Long-Term On-the-Job Training | \$48,755 |
| Health Educator | Master's Degree | \$53,90 |
| Police & Sheriff's Patrol Officers | Long-Term On-the-Job Training | \$35,40 |
| Lawyers | Doctoral Degree | \$139,500 |

CAREER CLUSTER IN MARKETING

Marketing and Management Career Pathway Courses (CHS, HHS, NHS, RHS, SHS, WHS)

- Marketing Principles
- Marketing and Entrepreneurship (**Prerequisite:** *Marketing Principles*)
- Marketing Management (**Prerequisite:** *Marketing and Entrepreneurship*)



| OCCUPATION SPECIALTIES | LEVEL OF EDUCATION NEEDED | AVERAGE SALARY |
|-------------------------------|--|----------------|
| Chief Executive | Bachelor's Degree plus work experience | \$155, 168 |
| Marketing Research Analyst | Bachelor's Degree | \$61,464 |
| Marketing Manager | Bachelor's Degree plus work experience | \$94,307 |
| Personal Financial Advisor | Bachelor's Degree | \$75,754 |
| Human Resources and Training, | Bachelor's Degree | \$53,061 |

CAREER CLUSTER IN SCIENCE, TECHNOLOGY, ENGINEERING, AND MATHEMATICS

Engineering Pathway Courses (WHS)

- Foundations of Engineering and Technology
- Engineering Concepts (*Prerequisite: Foundations of Engineering and Technology*)
- Engineering Applications (*Prerequisite: Engineering Concepts*)



| OCCUPATION SPECIALTIES | LEVEL OF EDUCATION NEEDED | AVERAGE SALARY |
|--|---------------------------|----------------|
| Civil Engineer | Bachelor's Degree | \$69,846 |
| Civil Engineering Technician | Associate's Degree | \$37,586 |
| Electrical Engineer | Bachelor's Degree | \$74,547 |
| Industrial Engineer | Bachelor's Degree | \$67,600 |
| Electrical / Electronic Engineering Technician | Associate's Degree | \$49,691 |

Appendix C

Notes/Resume Preparation:

Goals:

Personal:

Professional:

Clubs:

Offices Held:

Honors:

Service:

Work Experience:

Appendix D

HOPE Scholarship Rigor Requirements

Effective May 1, 2015 new requirements were included in the HOPE legislation. These changes impact students graduating from high school on or after May 1, 2015. In order to qualify for the HOPE Scholarship, students must meet the following academic rigor requirements

| High School Graduating Class | Students must receive credit in the following types of courses: | Minimum number of courses required prior to graduation |
|------------------------------|--|--|
| 2015 | | 2 |
| 2016 | | 3 |
| 2017 And Beyond | <ol style="list-style-type: none"> 1) Advanced math, such as Advanced Algebra and Trigonometry, Math III, or an equivalent or higher course taken at an eligible high school or taken for degree level credit at an eligible postsecondary institution; 2) Advanced Science, such as Chemistry, Physics, Biology II, or an equivalent or higher course taken at an eligible high school or taken for degree level credit at an eligible postsecondary institution; 3) Advanced placement courses in core subjects; 4) International baccalaureate courses in core subjects; 5) Courses taken at a unit of the University System of Georgia in core subjects where such courses are not remedial and developmental courses; or 6) Advanced foreign language courses taken at an eligible high school or taken for degree level credit at an eligible postsecondary institution. | 4 |

HOPE Scholarship Rigor Requirements

(Georgia Student Finance Commission)

The following Bibb courses possess academic rigor to meet the HOPE Rigor Requirement. Unless further notified, to be eligible for the HOPE Scholarship, 9th graders entering high school in 2018-2019 are required to meet the 4 course minimum requirement prior to graduation.

| English | Course Number |
|--|---------------|
| IB English 11 | 23.X680XXX |
| IB English 12 | 23.X690XXX |
| AP Language / Composition | 23.X530XXX |
| AP Literature / Composition | 23.X650XXX |
| Math | Course Number |
| IB Math SL | 27.X612XXX |
| IB Math HL | 27.X613XXX |
| AP Calculus AB | 27.X720XXX |
| AP Calculus BC | 27.X730XXX |
| AP Statistics | 27.X740XXX |
| Calculus | 27.X780XXX |
| Mathematics III: Advanced Algebra / Statistics | 27.X830XXX |

| | |
|---|------------|
| Mathematics IV: Pre-Calculus / Trig. /Stat. | 27.X840XXX |
| Advanced Mathematical Decision Making | 27.X850XXX |
| Accelerated Mathematics III: Pre-Calculus / Trig / Stat | 27.X930XXX |
| CCGPS Advanced Algebra | 27.X973XXX |
| CCGS Pre-Calculus | 27.X974XXX |
| Accelerated CCGPS Pre-Calculus | 27.X977XXX |
| Science | |
| IB Biology SL | 26.X180XXX |
| IB Biology HL | 26.X190XXX |
| IB Physics SL | 40.X850XXX |
| IB Physics HL | 40.X860XXX |
| AP Biology | 26.X140XXX |
| AP Environmental Science | 26.X620XXX |
| AP Physics B | 40.X830XXX |
| AP Physics C: Mechanics | 40.X841XXX |
| Human Anatomy & Physiology | 26.X730XXX |
| Chemistry I | 40.X510XXX |
| Physics I | 40.X810XXX |
| Physics II | 40.X820XXX |
| Biology II | 26.X130XXX |
| Forensic Science | 40.X930XXX |
| Scientific Research III | 40.X923XXX |
| Scientific Research IV | 40.X924XXX |
| Social Studies | |
| AP Government/Politics: US | 45.X520XXX |
| AP Macroeconomics | 45.X620XXX |
| AP World History | 45.X811XXX |
| AP United States History | 45.X820XXX |
| AP Psychology | 45.X160XXX |
| Foreign Language | |
| IB French SL | 60.X112XXX |
| IB French HL | 60.X113XXX |
| AP Spanish / Language | 60.X770XXX |
| French II | 60.X120XXX |
| French III | 60.X130XXX |
| Spanish II | 60.X720XXX |
| Spanish III | 60.X730XXX |
| Spanish IV | 60.X740XXX |

**** A DE approved course, which is a higher level content course taken for degree level credit at an eligible postsecondary institution will also satisfy the HOPE Rigor Requirements.**

Appendix E:

Individual Graduation Planning Sheet ACCESS Courses

Student Name: _____

| Subject | Units Required | Required Courses | Classes Completed |
|---|----------------|---|-------------------|
| English (4) | 1 | ACCESS 9 th grade Literature and Composition | |
| | 1 | ACCESS American Literature and Composition | |
| | 2 | ACCESS 10 th grade Literature and Composition, World Literature and Composition; English Literature/Composition; DE course; can be any AP or IB course | |
| Math(4) | 1 | ACCESS Coordinate Algebra or Accelerated Coordinate Algebra/Analytic Geometry A | |
| | 1 | ACCESS Analytic Geometry or Accelerated Analytic Geometry B/Advanced Algebra | |
| | 1 | ACCESS Advanced Algebra or Accelerated Pre-Calculus | |
| | 1 | ACCESS Pre-Calculus or AP, IB, AMDM, or DE course | |
| Science (4) | 1 | ACCESS Biology (can be AP/IB or DE) | |
| | 1 | ACCESS Physics or Physical Science (can be AP/IB or DE) | |
| | 1 | ACCESS Chemistry, Earth Systems, Environmental Science, or an AP/IB course or DE course | |
| | 1 | ACCESS Science of choice (AP/IB; DE; academic science, or specific CTAE science course from DOE approved list) | |
| Social Studies (3) | 1 | ACCESS World History (can be AP/IB; DE) | |
| | 1 | ACCESS US History (can be AP/IB; DE) | |
| | ½ | ACCESS Economics/Business/Free Enterprise (can be AP/IB; DE) <i>Senior level course</i> | |
| | ½ | ACCESS Local, State and American Government (can be AB/IB; DE for 9 th graders) | |
| Health and Physical Education | 1 | ACCESS Health (1/2) & Personal Fitness (1/2) (3 units of ROTC may substitute for the Health/PE requirement) | |
| Career, Technical or Agricultural Education (CTAE); Fine Arts; or Foreign Language | 3 | A total of 3 units required from CTAE and/or Foreign Language and/or Fine Arts and/or American Sign Language or DE NOTE: to be considered in the Georgia Scholar Program, a student must have one unit in Fine Arts NOTE: students planning to enter or transfer into a University System of Georgia institution or other post-secondary institution must take two units of the same foreign language | |
| Electives (5) | 5 | 5 additional elective units, which should complete the student's career pathway or program concentration; math support class units count as electives | |
| Total Units Needed | 24 | Passing grades on all 24 above units | |

Appendix F:

Individual Graduation Planning Sheet

Student Name: _____

| Subject | Units Required | Required Courses | Classes Completed |
|---|----------------|---|-------------------|
| English (4) | 1 | 9 th grade Literature and Composition | |
| | 1 | American Literature and Composition | |
| | 2 | 10 th grade Literature and Composition, World Literature and Composition; English Literature/Composition; DE course; can be any AP or IB course | |
| Math(4) | 1 | Foundations of Algebra*, Algebra I, Geometry, Accelerated Algebra I/Geometry A | |
| | 1 | Algebra I, Geometry, Algebra II, Accelerated Geometry B/Algebra II | |
| | 1 | Geometry, Algebra II, Pre-Calculus, Accelerated Pre-Cal. | |
| | 1 | Algebra II, Pre-Calculus, Accelerated Pre-Calculus, College Readiness Mathematics, AP Calculus, AP Statistics | |
| Science (4) | 1 | Biology (can be AP/IB or DE) | |
| | 1 | Physics or Physical Science (can be AP/IB or DE) | |
| | 1 | Chemistry, Earth Systems, Environmental Science, or an AP/IB course or DE course | |
| | 1 | Science of choice (AP/IB; DE; academic science, or specific CTAE science course from DOE approved list) | |
| Social Studies (3) | 1 | World History (can be AP/IB; DE) | |
| | 1 | US History (can be AP/IB; DE) | |
| | ½ | Economics/Business/Free Enterprise (can be AP/IB; DE) <i>Senior level course</i> | |
| | ½ | Local, State and American Government (can be AB/IB; DE for 9 th graders) | |
| Health and Physical Education | 1 | Health (1/2) & Personal Fitness (1/2) (3 units of ROTC may substitute for the Health/PE requirement) | |
| Career, Technical or Agricultural Education (CTAE); Fine Arts; or Foreign Language | 3 | A total of 3 units required fro CTAE and/or Foreign Language and/or Fine Arts and/or American Sign Language or DE NOTE: students planning to enter or transfer into a University System of Georgia institution or other post-secondary institution must take two units of the same foreign language | |
| Electives (5) | 5 | 5 additional elective units, which should complete the student's career pathway or program concentration; math support class units count as electives | |
| Total Units Needed | 24 | Passing grades on all 24 above units | |

**Not all post-secondary institutions will accept Foundations of Algebra, therefore the student may need to take an additional course*